



PLUS TWP-XUT INSTALLATION GUIDE

IG_PLUS_TWP-XUT_E01A

PLUS TWP-XUT WIRELESS TRANSMITTER INSTALLATION GUIDE

Table of contents

step
01 **WGW420 PLUS WIRELESS GATEWAY CONFIGURATION**
Pages 4 to 12

step
02 **TWP-XUT PLUS WIRELESS TRANSMITTER CONFIGURATION**
Pages 13 to 19

step
03 **TWP-XUT TRANSMITTER TEMPERATURE INPUT CONFIGURATION**
Pages 20 to 23

step
04 **TWP-XUT TRANSMITTER DIGITAL OUTPUT CONFIGURATION**
Pages 24 to 26

step
05 **WGW420 GATEWAY ANALOG OUTPUTS CONFIGURATION**
Pages 27 to 29

PLUS TWP-XUT WIRELESS TRANSMITTER INSTALLATION GUIDE

Table of contents

step 06	WRP001 PLUS WIRELESS REPEATER CONFIGURATION Pages 30 to 35
-------------------	--

step 07	SITE SURVEY MODE Pages 36 to 37
-------------------	---

step
01

WGW420 PLUS WIRELESS GATEWAY CONFIGURATION

WG420 PLUS WIRELESS GATEWAY CONFIGURATION | step
01

TEKON CONFIGURATOR SOFTWARE is only compatible with the Microsoft® Windows® Operating System.

01 Connect the antenna to the *Gateway*.



02 **Wiring**
Connect the power supply and then the *RS485-USB* cable to the *Gateway*.



Wire Indication:
Blue - GND; Brown - +24 VDC; Orange - Data+ (A); Black - GND; Yellow - Data - (B)

03 Power ON the device.



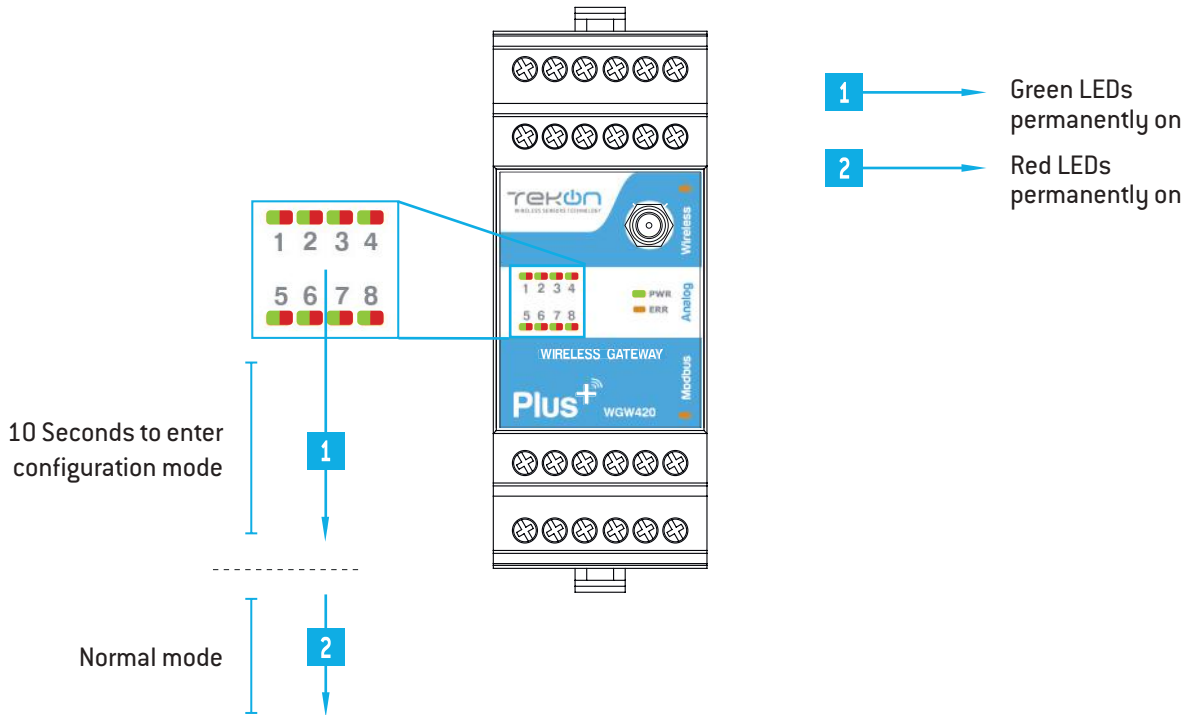
step

01

WGW420 PLUS WIRELESS GATEWAY CONFIGURATION

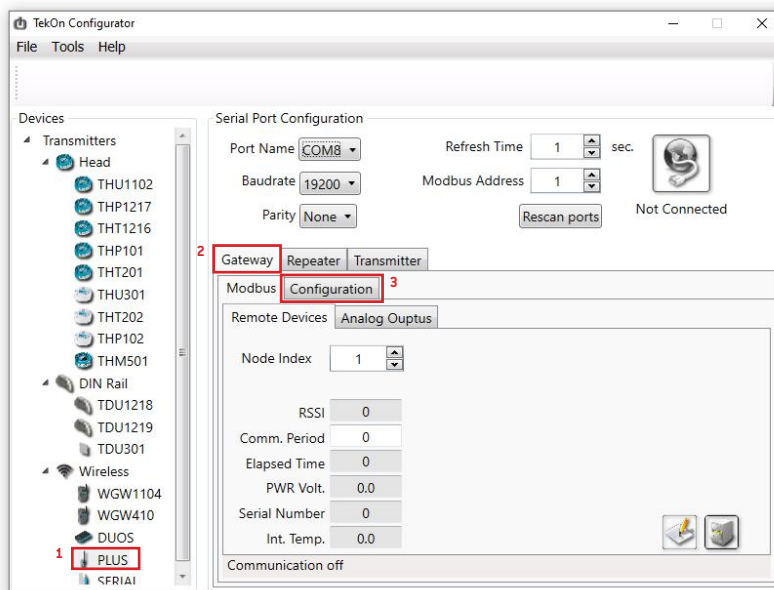
04

Check device connection state by LED indication.



05

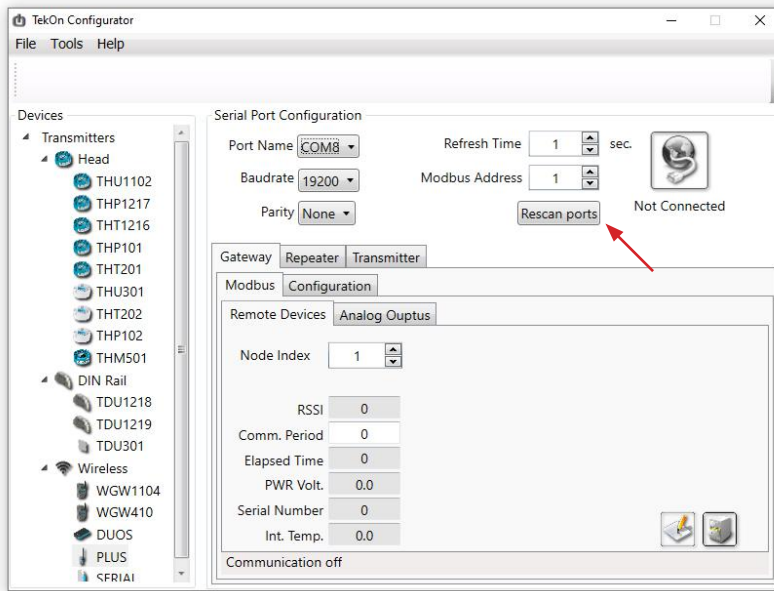
Open *Tekon Configurator Software*¹ and select *PLUS >> Gateway >> Configuration*



¹ Tekon Configurator software is free of charge and available at www.tekonelectronics.com

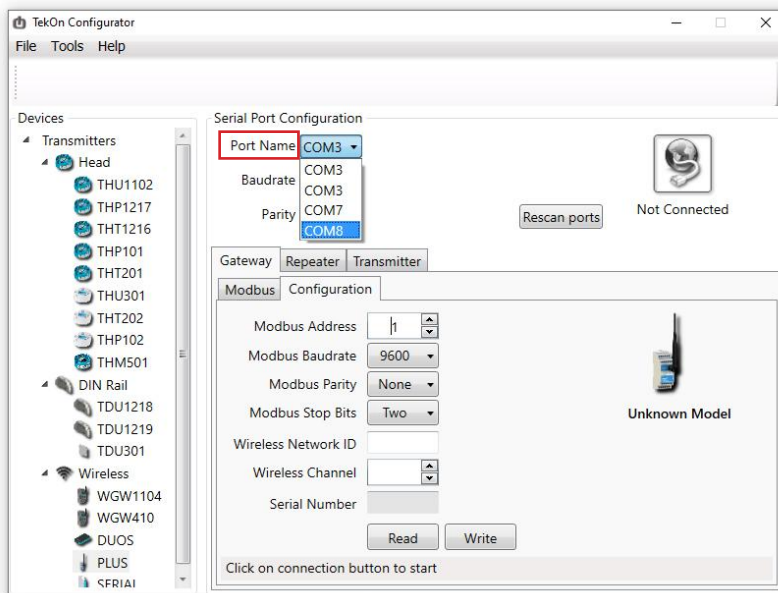
06

Select serial port corresponding to WG420 PLUS Wireless Gateway
Click on the *Rescan Ports* button.



07

Select corresponding *Port name*².



² You can check device's serial port name in "Device Manager" on Microsoft® Windows® operating system.

step

01

WGW420 PLUS WIRELESS GATEWAY CONFIGURATION

08

Perform a power cycle on the *Gateway*.




NOTE:

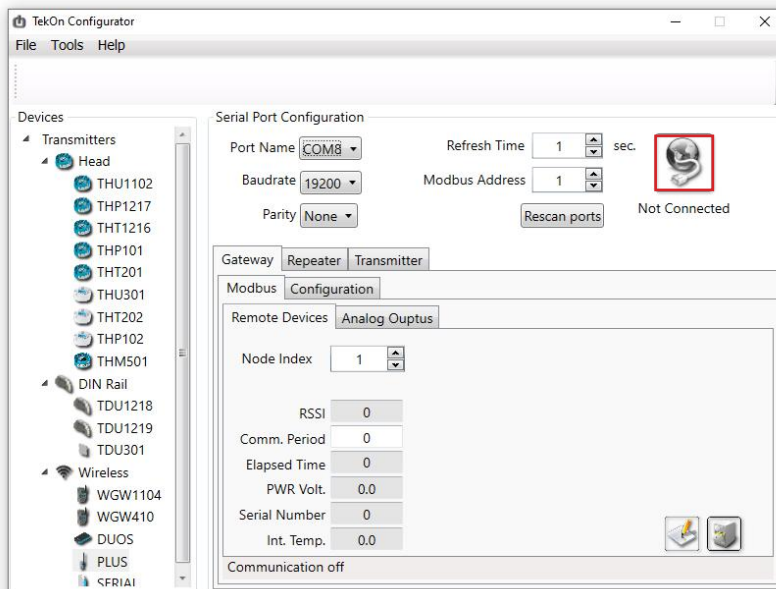


After power up, you have 10 seconds to enter configuration mode by clicking on Connect button () (while green LEDs are permanently on).

In this mode, you can manage device parameters: *Modbus Address*, *Modbus Baudrate*, *Modbus Parity*, *Wireless Network ID* and *Wireless Channel*.

09

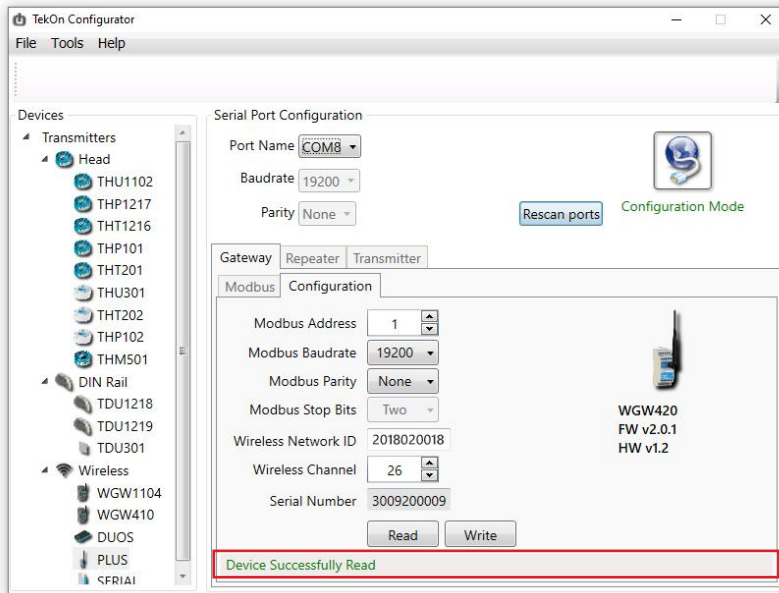
Click on *Connect* () button to enter configuration mode.



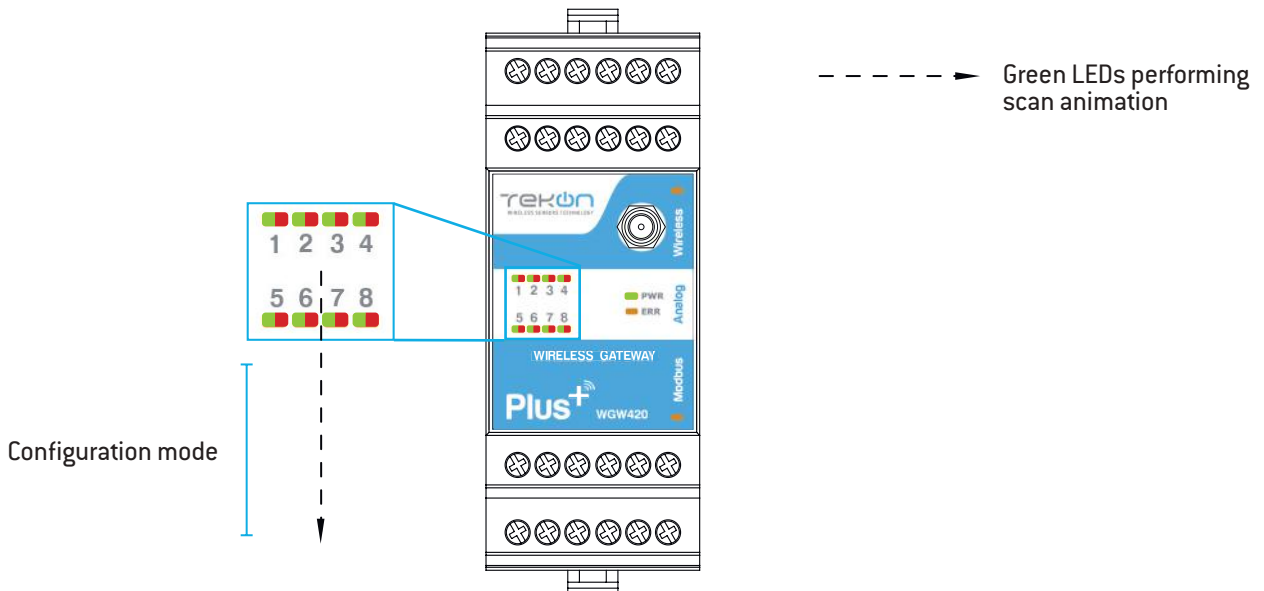
WG420 PLUS WIRELESS GATEWAY CONFIGURATION

10

The status string at the bottom of the software window provides feedback on ongoing operations.



You can also verify configuration mode activation by checking LEDs on the gateway.



NOTE:

When the 10-second time frame to enter configuration mode is exceeded, the LEDs will turn permanently red and the gateway will enter normal operation mode.

To get back in configuration mode, you need to perform a power cycle - step 8.

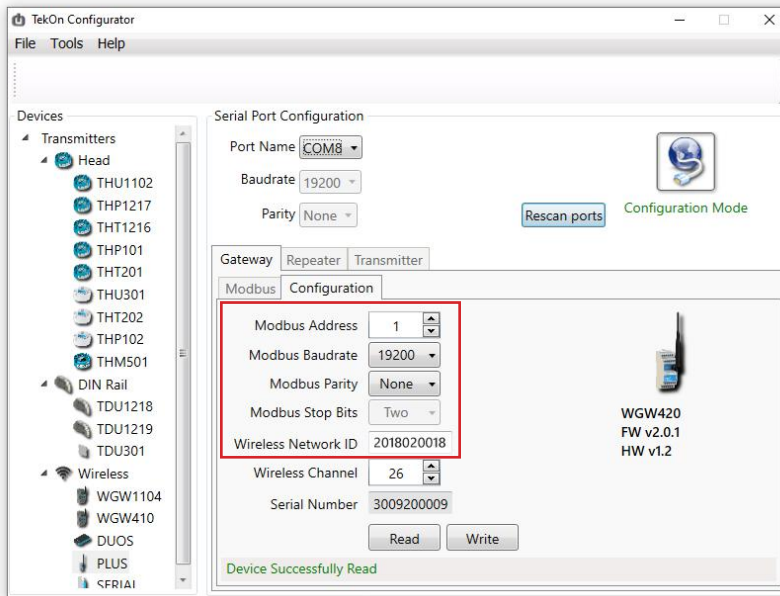
step

01

WGW420 PLUS WIRELESS GATEWAY CONFIGURATION

11

Take note of device configuration data available, namely: *Modbus Address*, *Modbus Baudrate*, *Modbus Parity*, *Wireless Network ID* and *Wireless Channel*.

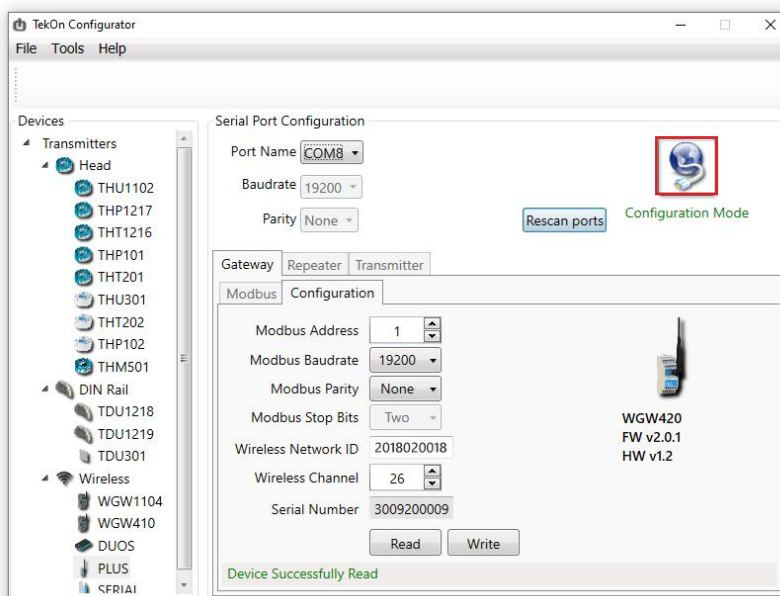


NOTE:

The wireless network connection between devices is ensured by setting the same *Wireless Network ID* and *Wireless Channel* parameters.

12

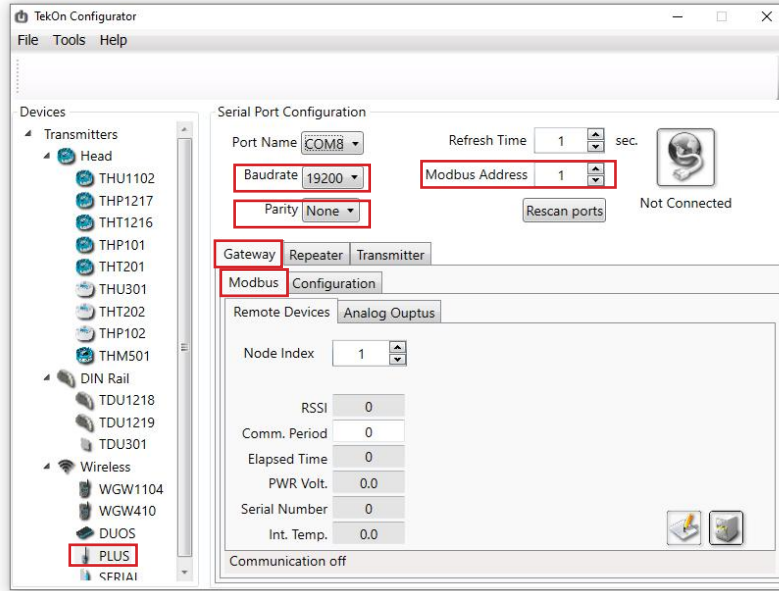
Click on *Disconnect* (🌐) button.



13

Modbus Communication

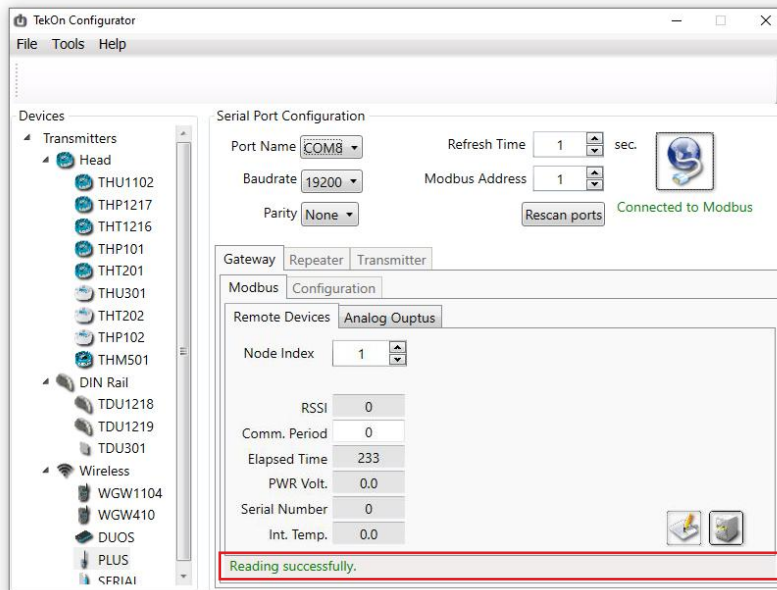
Select *Modbus* tab of the *Gateway* and set the previously saved configurations.



Ensure that *Port name*, *Baudrate*, *Parity* and *Modbus Address* fields are the same as those obtained in configuration mode.

14

Click on *Connect* (🌐) button and check operation status at the bottom of the window.



The messages *Connected to Modbus* and *Reading successfully* will appear if *Serial Port* configuration parameters are correct and the Modbus connection is established.

step

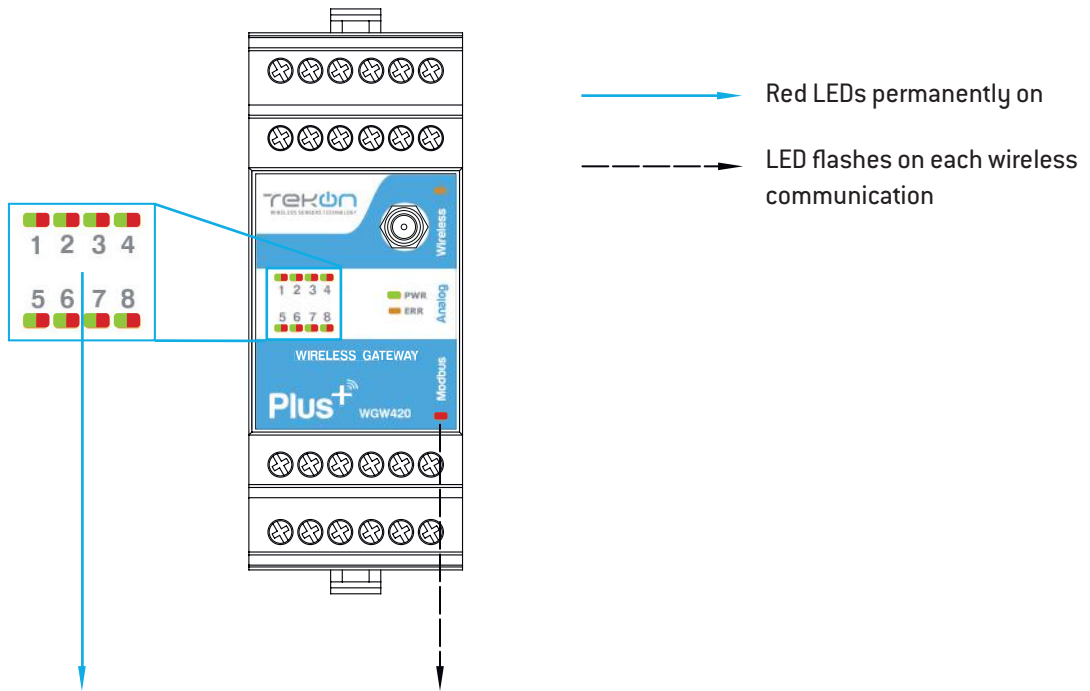
01

WG420 PLUS WIRELESS GATEWAY CONFIGURATION



NOTE:

See WG420 Datasheet to access LED indication information - page 4.



step
02

TWP-XUT PLUS WIRELESS TRANSMITTER CONFIGURATION

step

02

TWP-XUT PLUS WIRELESS TRANSMITTER CONFIGURATION

01

Loosen the 4 screws of the case and open it.

[Example image]



02

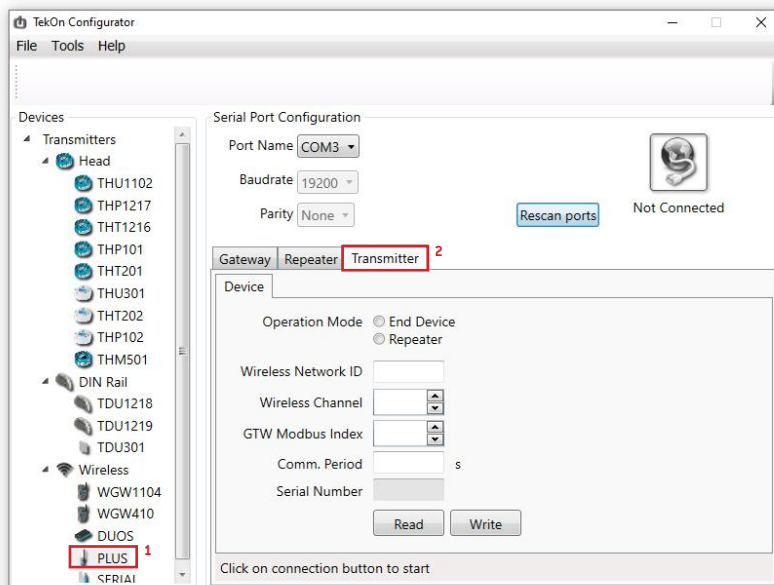
Connect a micro USB cable to the computer and then to *TWP-1UT PLUS Wireless Transmitter*.

[Example image]



03

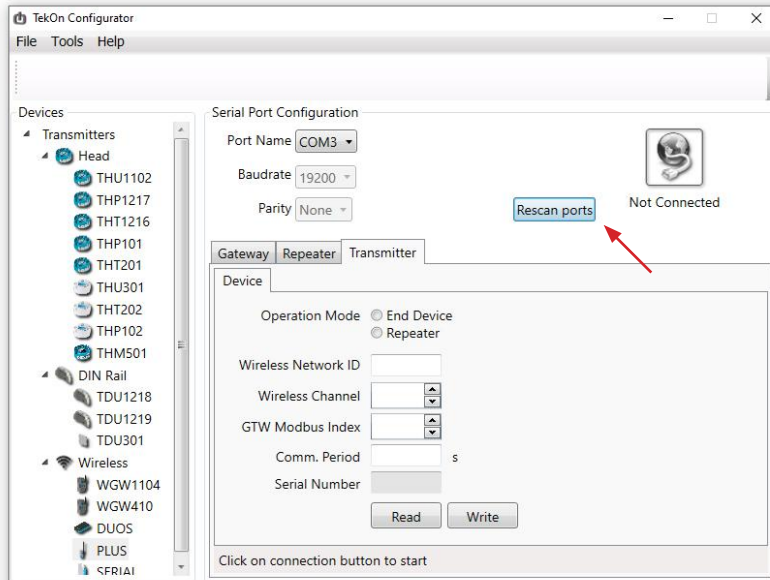
Open a new window of *Tekon Configurator Software* and select *PLUS >> Transmitter* menu.



TWP-XUT PLUS WIRELESS TRANSMITTER CONFIGURATION

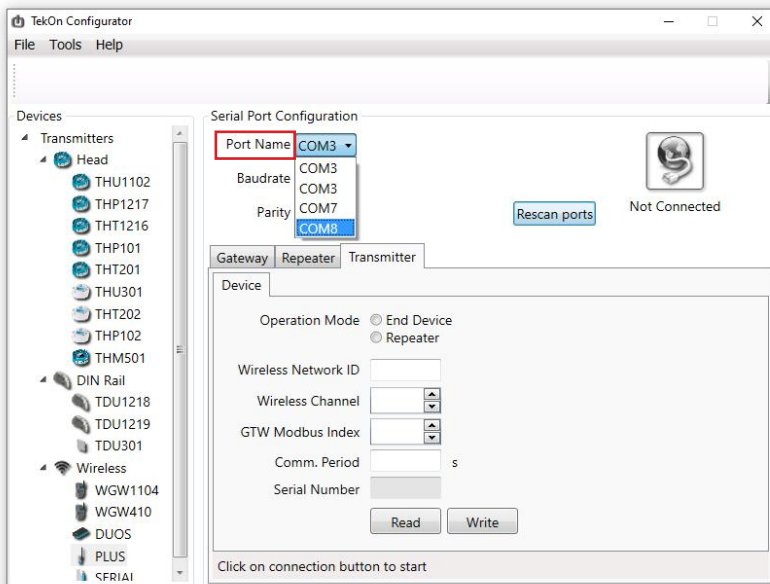
04

Click on *Rescan Ports* button.



05

Select corresponding *Port name*¹.



¹ You can check device's serial port name in "Device Manager" on Microsoft® Windows® operating system.

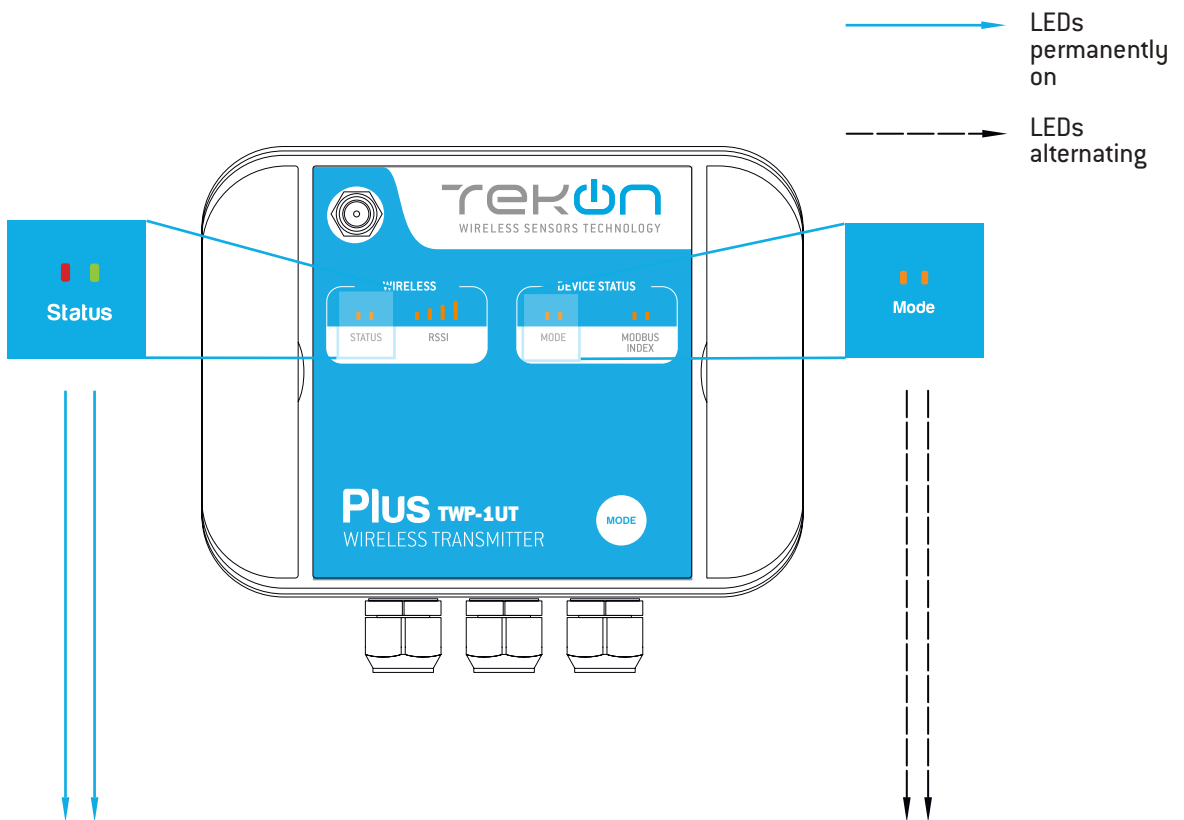
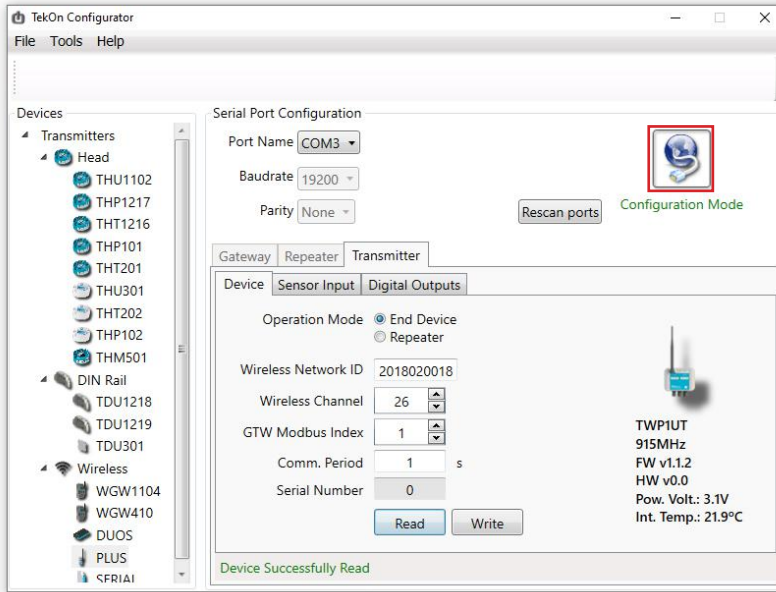
step

02

TWP-XUT PLUS WIRELESS TRANSMITTER CONFIGURATION

06

Click on *Configuration Mode* (🌐) button.



TWP-XUT PLUS WIRELESS TRANSMITTER CONFIGURATION

07

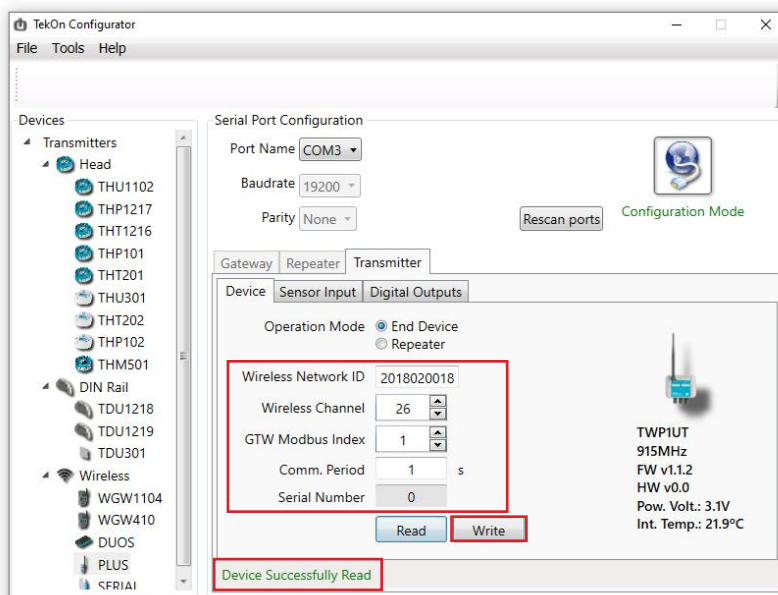
Configure *Wireless Network ID* and *Wireless Channel* previously obtained from *Gateway*.

The wireless connection between both devices is ensured by setting the same *Wireless Network ID* and *Wireless Channel* parameters.

Gateway Modbus Index will define the modbus registers window used to store information sent by the transmitter.

Each transmitter should have a different *Gateway Modbus Index* in order to avoid information override.

Click on *Write* button to update *Transmitter* settings.



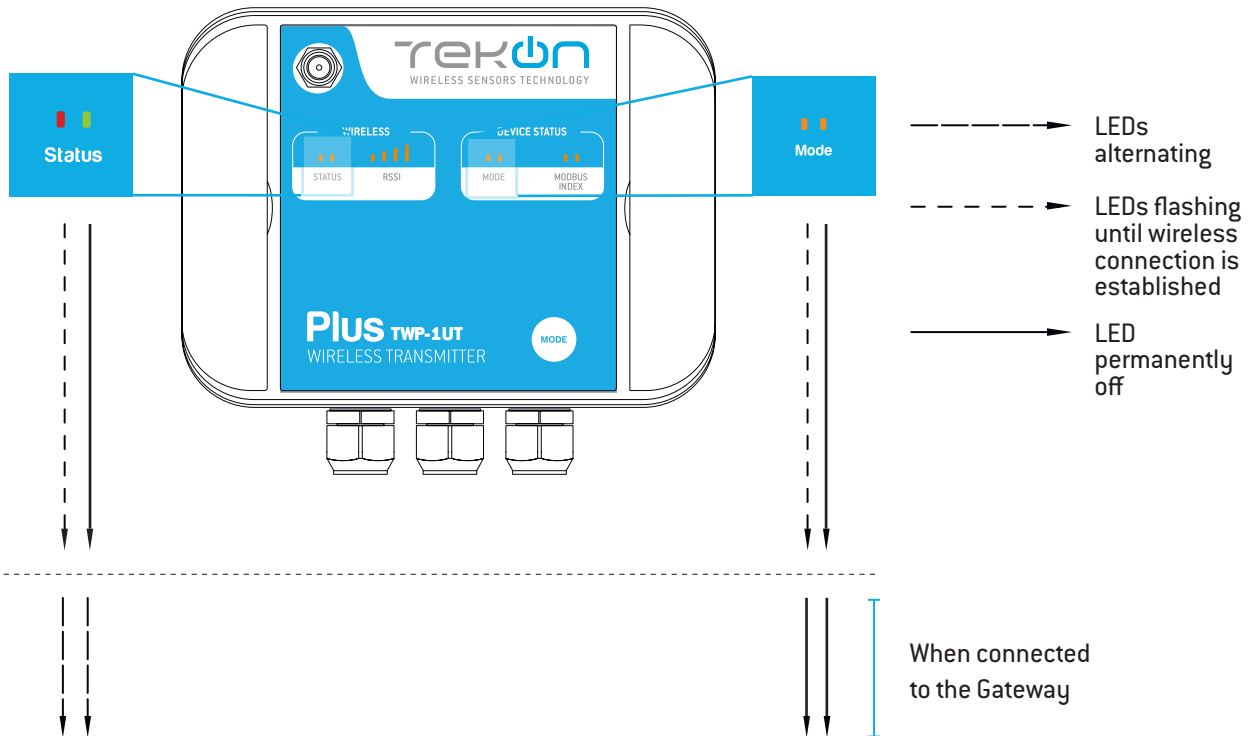
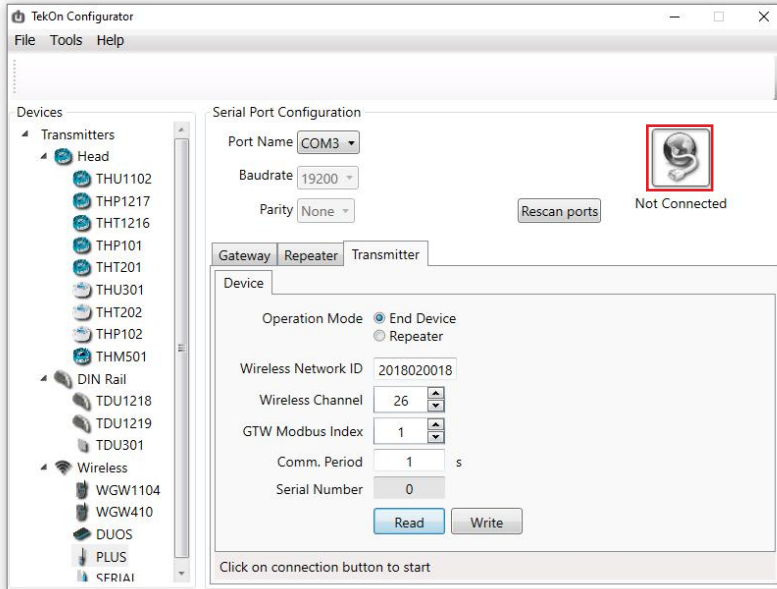
step

02

TWP-XUT PLUS WIRELESS TRANSMITTER CONFIGURATION

08

Click on *Configuration Mode* (🔧) button to exit setup and resume normal operating mode.



TWP-XUT PLUS WIRELESS TRANSMITTER CONFIGURATION

step
02

After clicking on *Disconnect* button, the device will permanently attempt to connect to a wireless network. If there is no communication, the Status LED flashes slowly and the Mode LED flashes quickly. When there's a successful connection directly to a wireless network, both status LEDs alternate quickly - during 1 minute if the transmitter is operating as end device or permanently if operating as repeater.

**NOTE:**

Make sure that the devices are at a distance of at least 3 meters or remove the antenna from the gateway (in case both devices are near each other).

step
03

TWP-XUT TRANSMITTER TEMPERATURE INPUT CONFIGURATION

TWP-XUT TRANSMITTER TEMPERATURE INPUT CONFIGURATION



NOTE:

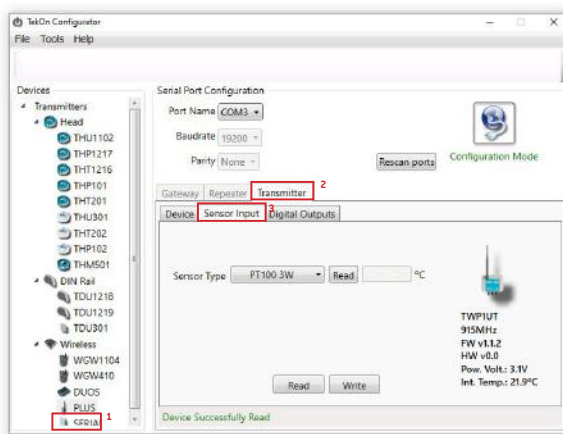
By default, temperature inputs are configured as PT100 3W. Each temperature input can be configured independently, as PT100 or Thermocouple.

01

To enter in *Configuration Mode* follow steps 01 to 05 of TWP-XUT PLUS Wireless *Transmitter* Configuration.

02

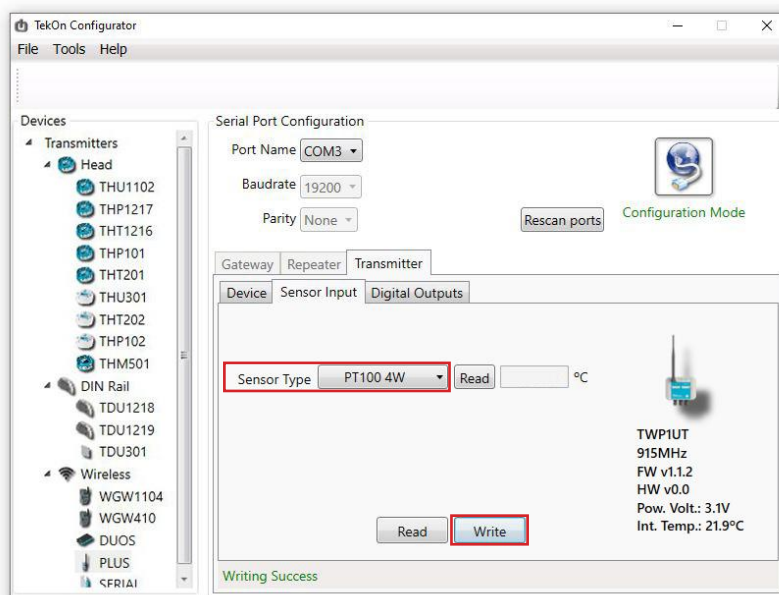
In *Tekon Configurator Software* select *PLUS* >> *Transmitter* >> *Sensor Input* menu



If you are configuring *PLUS TWP-2UT*, reproduce configuration steps to the second temperature input.

03

As an example, select *PT100 4W* option on Sensor Input 1 and click *Write*.



If you are configuring *PLUS TWP-2UT*, reproduce configuration steps to the second temperature input.

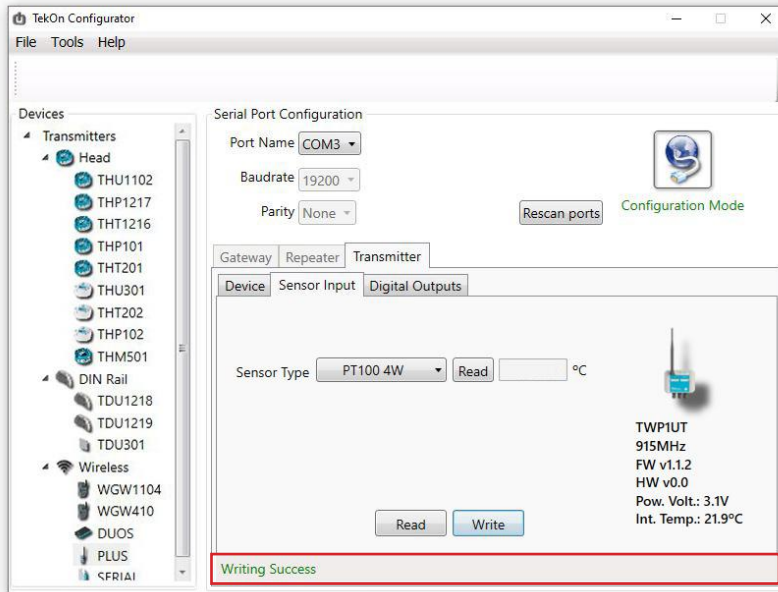
step

03

TWP-XUT TRANSMITTER TEMPERATURE INPUT CONFIGURATION

04

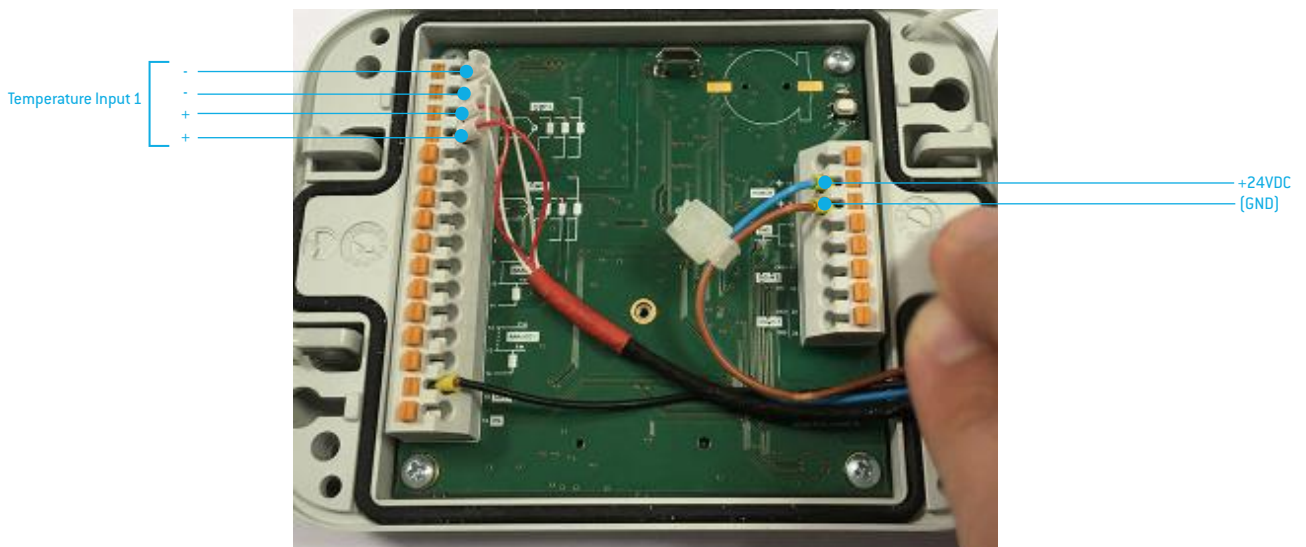
The status string at the bottom of the software window provides feedback on ongoing operations.



05

Wiring

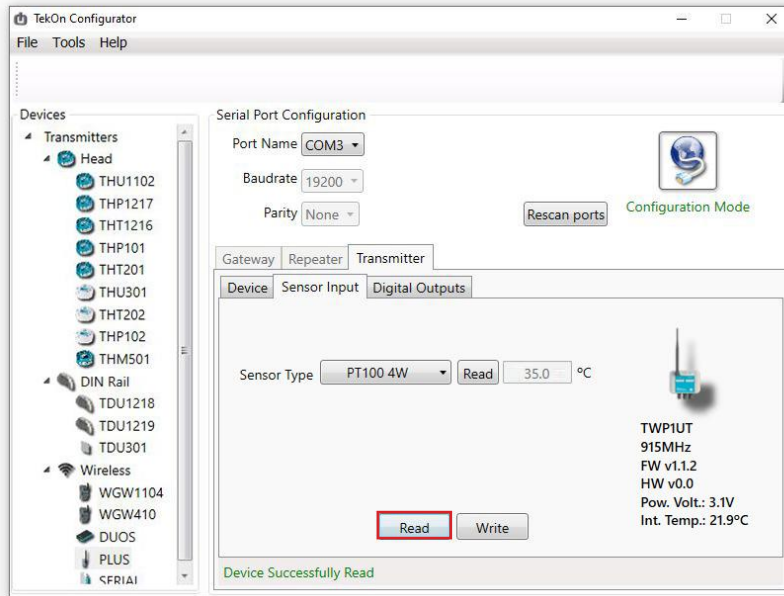
Wire the device according to the diagram below.



TWP-XUT TRANSMITTER TEMPERATURE INPUT CONFIGURATION

06

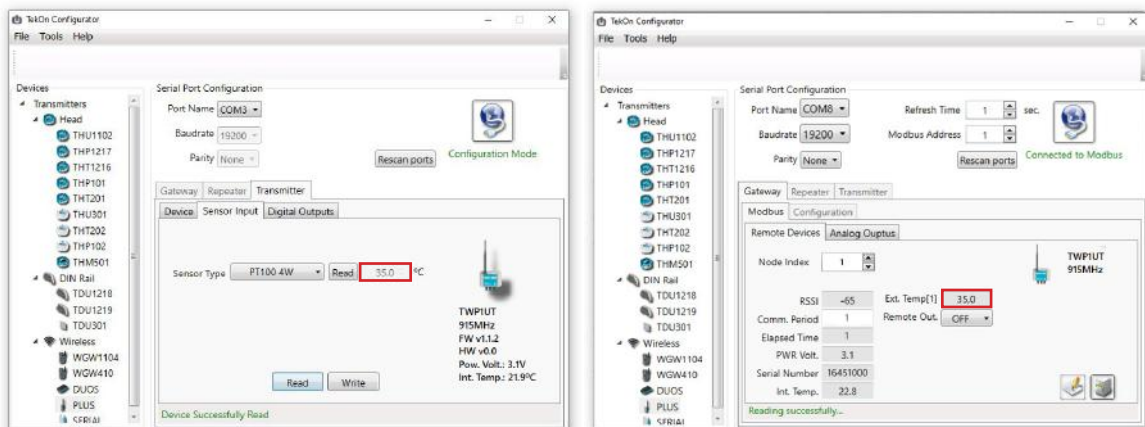
Validate configuration by clicking on *Read* button.



NOTE:
Configuration and Operation validated.

07

Exit configuration mode and compare data sent by wireless communication.



If you are configuring *PLUS TWP-2UT*, the second temperature input will appear on this interface.

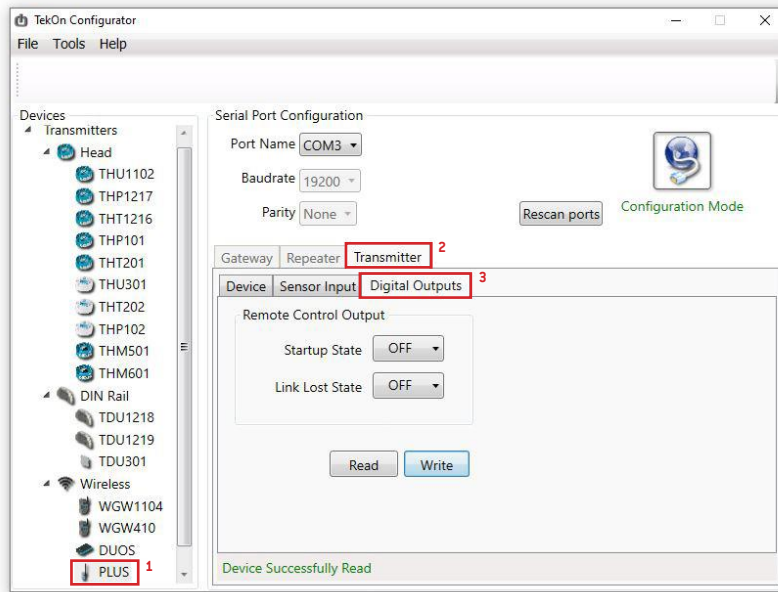
step
04

TWP-XUT TRANSMITTER DIGITAL OUTPUT CONFIGURATION

TWP-XUT TRANSMITTER DIGITAL OUTPUTS CONFIGURATION

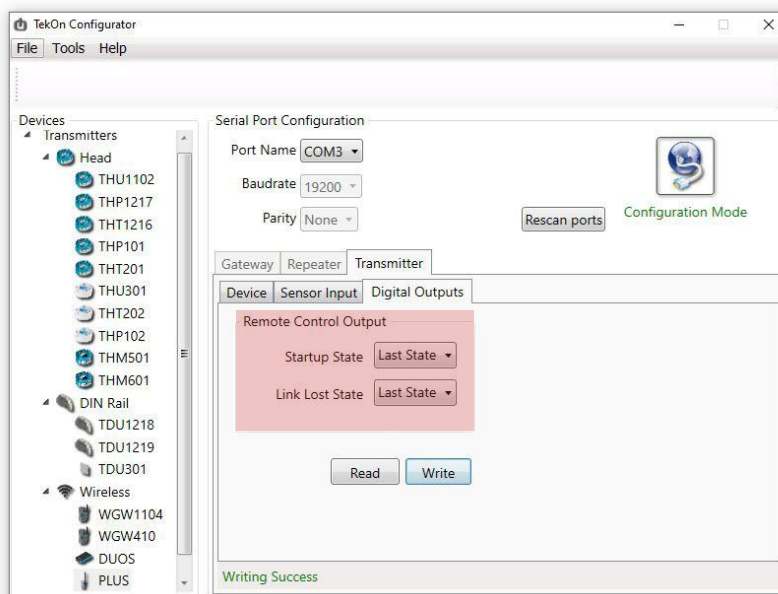
01 To enter in *Configuration Mode* follow steps 01 to 05 of TWP-XUT PLUS Wireless *Transmitter* Configuration.

02 In *Tekon Configurator Software* select *PLUS >> Transmitter >> Digital Outputs* menu



03 **Remote Control Output**
Digital output remotely controlled by Gateway modbus protocol.

Define *Start-up state* and *Link lost state*. Click on *Write* button.



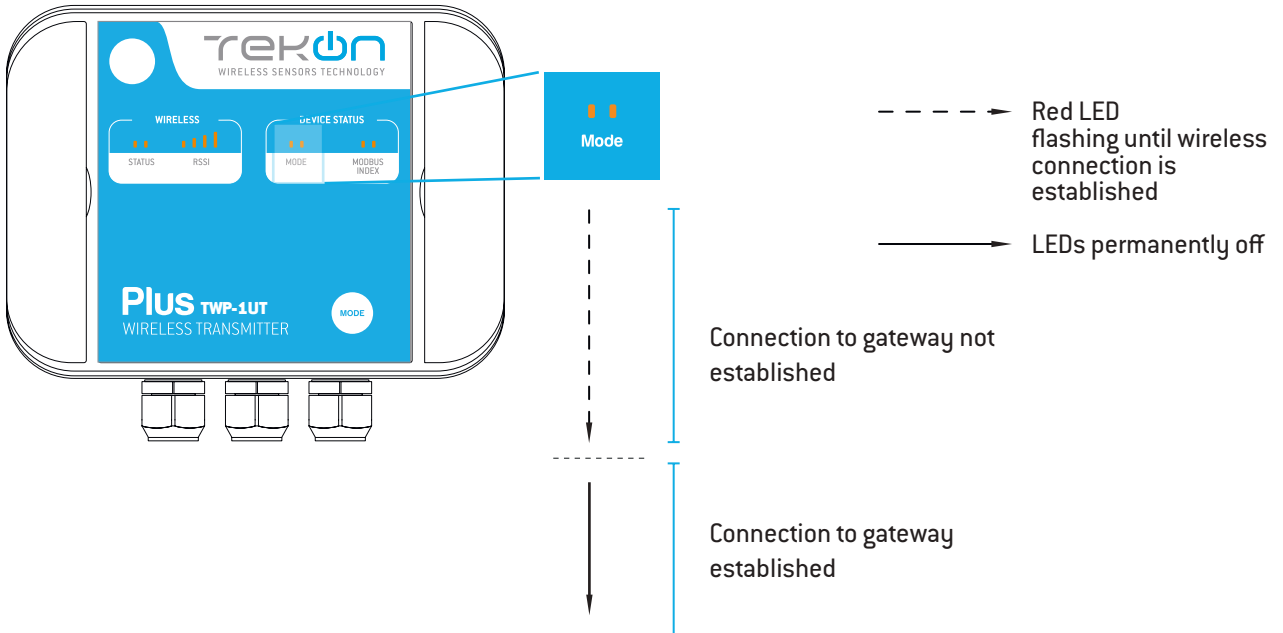
step

04

TWP-XUT TRANSMITTER DIGITAL OUTPUTS CONFIGURATION

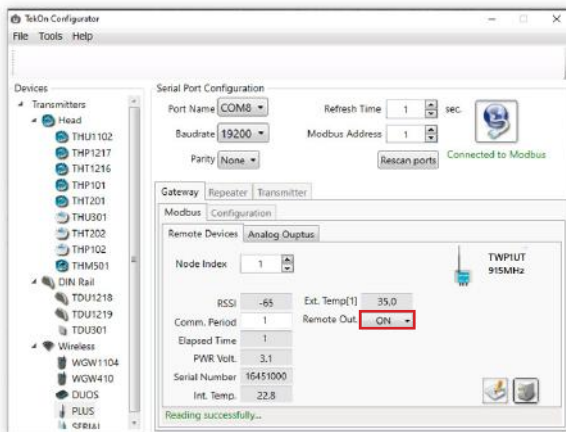
04

Exit configuration mode and verify setup by checking LEDs indicators.



05

Using the Tekon Configurator you can change the State of Remote Output by setting the modbus register on the gateway. The Gateway will send the information in the next time the transmitter performs a communication.



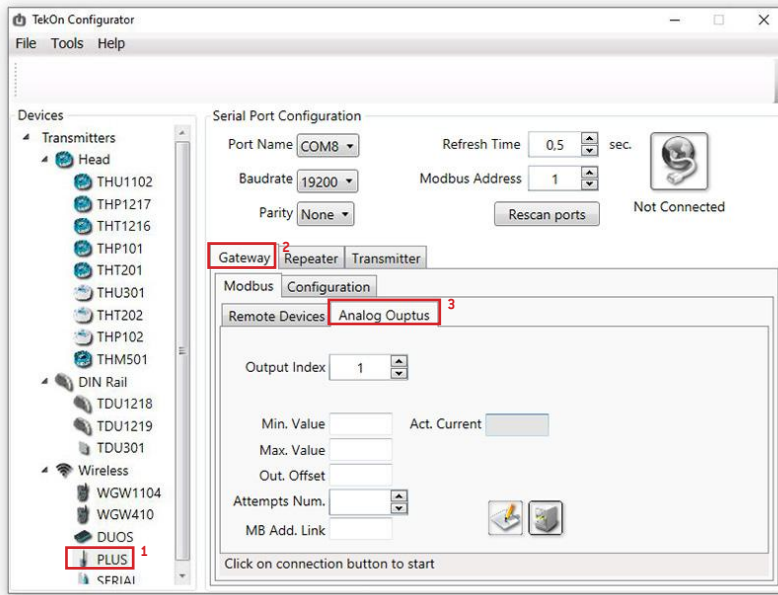
step
05

WGW420 GATEWAY ANALOG OUTPUTS CONFIGURATION

step
05 | GATEWAY ANALOG OUTPUTS

01 Follow steps 06 and 07 of the PLUS Wireless Gateway Configuration.

02 In *Tekon Configurator Software* select **PLUS** >> **Gateway** >> **Analog Outputs** menu



03 Considering the transmitter configuration with GTW Modbus Index=1, there is a Gateway Modbus Address Window corresponding to Modbus address window [0-19].

The screenshot shows the 'Transmitter' configuration window in TekOn Configurator. The 'GTW Modbus Index' is set to 1. A table titled 'HOLDING REGISTERS - TRANSMITTERS DATA' is overlaid on the right side of the window, showing the mapping between Modbus registers and their descriptions. A red box highlights the 'Data 1' row, which corresponds to Modbus address [9].

HOLDING REGISTERS - TRANSMITTERS DATA	
Description	Address
Serial Number	[Transmitter Modbus Index-1]x20+0
Transmitter Model	[Transmitter Modbus Index-1]x20+2
RSSI	[Transmitter Modbus Index-1]x20+3
Communication Period	[Transmitter Modbus Index-1]x20+4
Elapsed Time	[Transmitter Modbus Index-1]x20+5
Power Voltage	[Transmitter Modbus Index-1]x20+6
Data 0	[Transmitter Modbus Index-1]x20+7
Data 1	[Transmitter Modbus Index-1]x20+9
Data 2	[Transmitter Modbus Index-1]x20+11
Data 3	[Transmitter Modbus Index-1]x20+13
Data 4	[Transmitter Modbus Index-1]x20+15
FW Version Major Minor	[Transmitter Modbus Index-1]x20+17
FW Version Revision	[Transmitter Modbus Index-1]x20+18
HW Version Major Minor	[Transmitter Modbus Index-1]x20+19

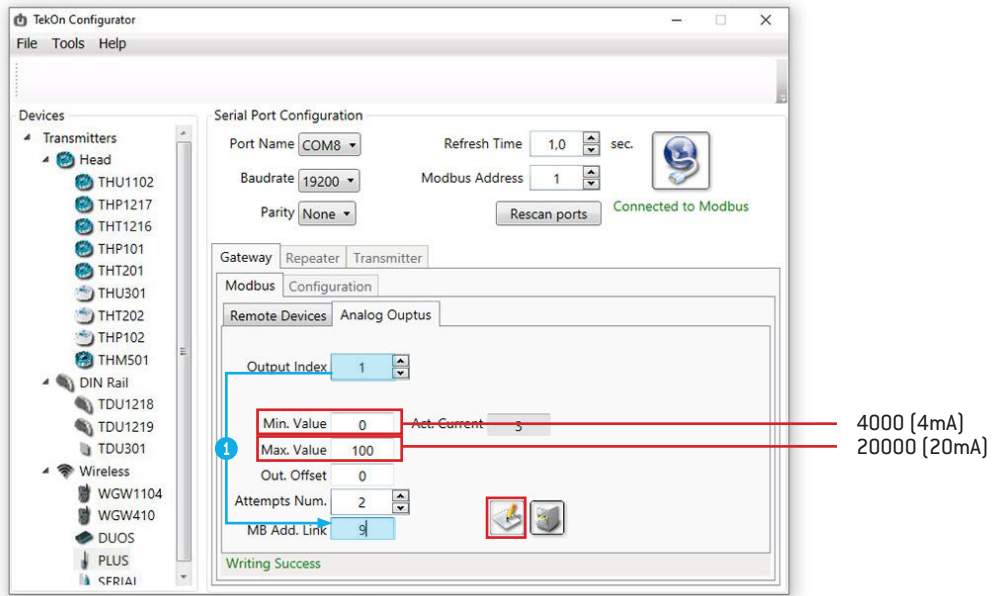


NOTE:

Transmitter temperature input 1 data is received and stored at the Gateway Modbus address [9].

04

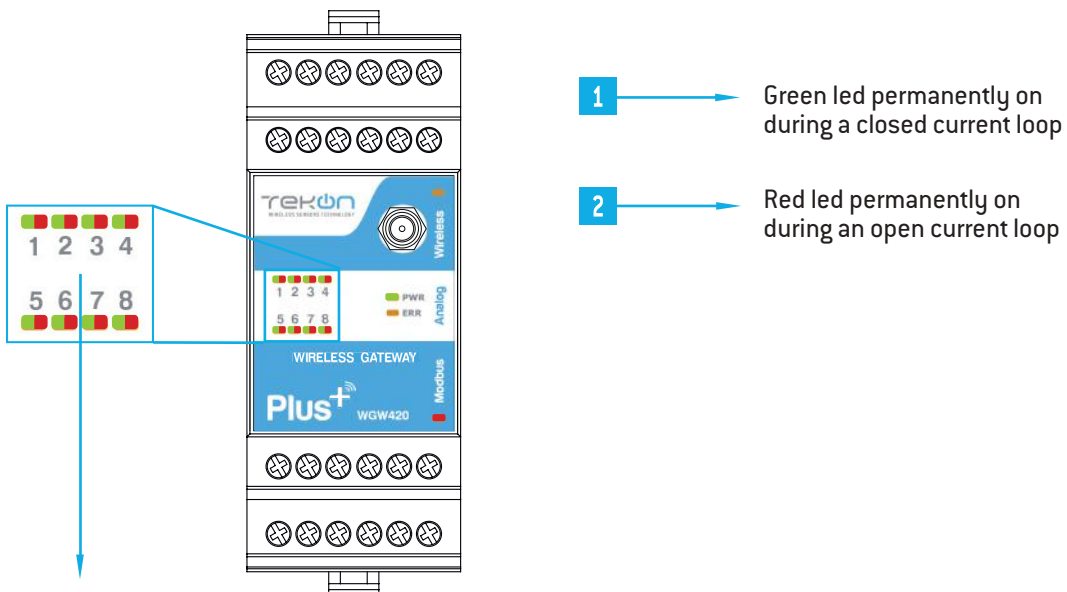
Link *Analog Output Index 1* (Gateway) to *Temperature Input 1* (Transmitter) and configure MB Add Link according to the previous step. Set minimum and maximum values and click on *Write*



NOTE:

① Output index 1 is linked to modbus address [9], according to mapping table of step 03.

Modbus address double word (float 32) value is converted into 4..20 mA scale according to minimum and maximum defined values.



step
06

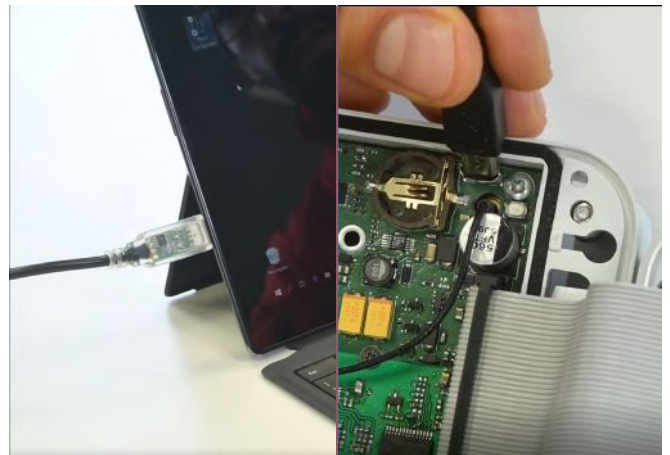
WRP001 PLUS WIRELESS REPEATER CONFIGURATION

CONNECT AND CONFIGURE THE PLUS WIRELESS REPEATER

01 Loosen the 4 screws of the case and open it.



02 Connect a micro USB cable to the computer and then to *WRP001 PLUS Wireless Repeater*.



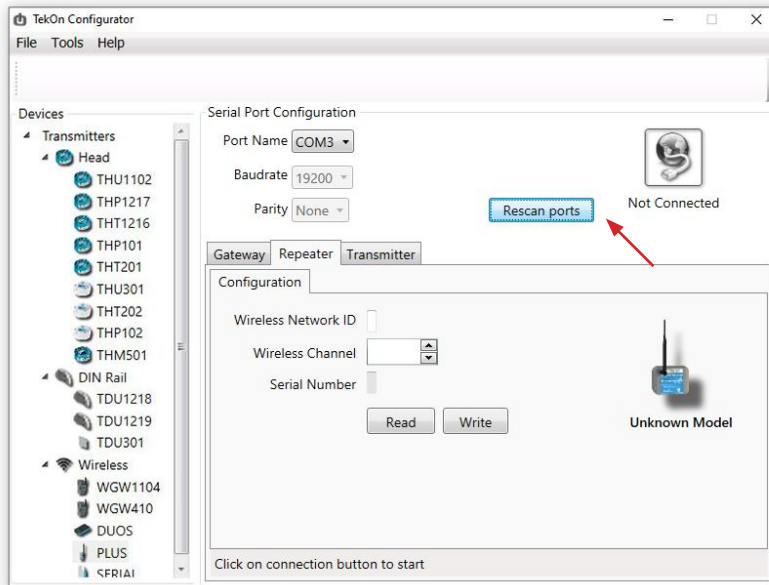
03 Open a new window of *TekOn Configurator Software* and select *PLUS >> Repeater* menu.

step
06

CONNECT AND CONFIGURE THE PLUS WIRELESS REPEATER

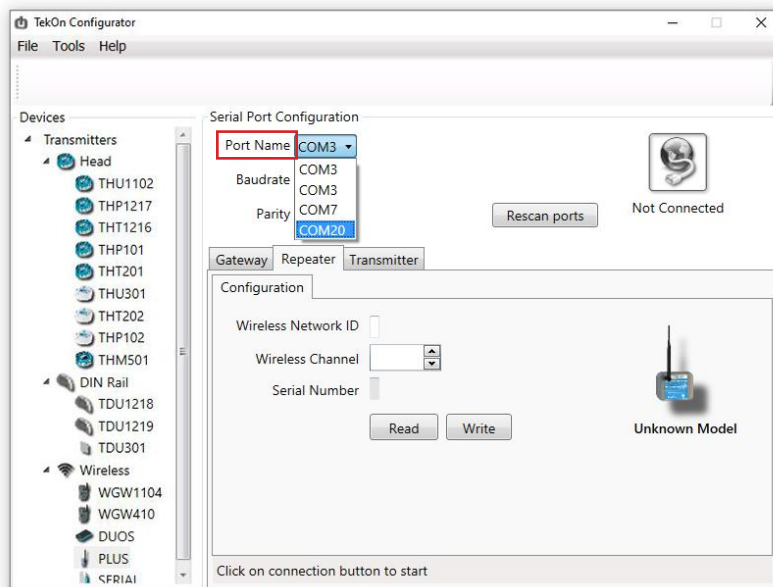
04

Click on *Rescan Ports* button.



05

Select corresponding *Port name*¹.

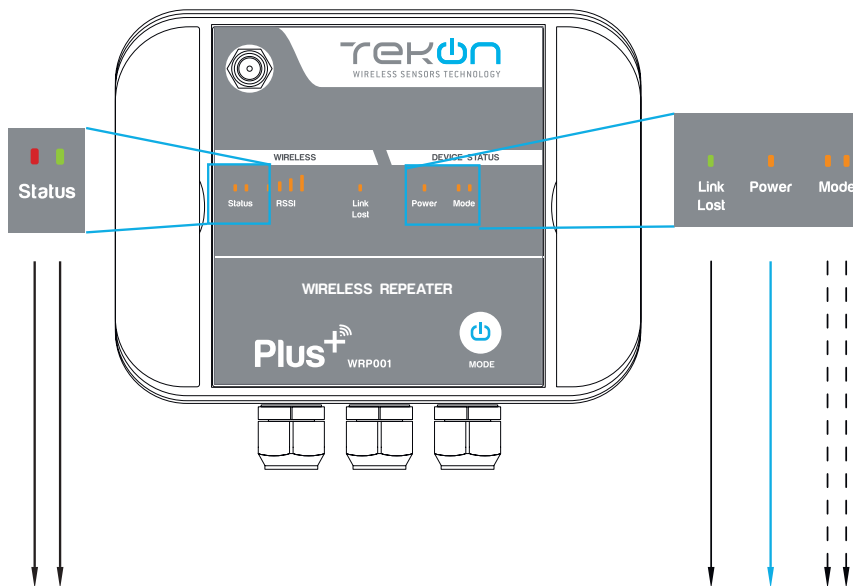
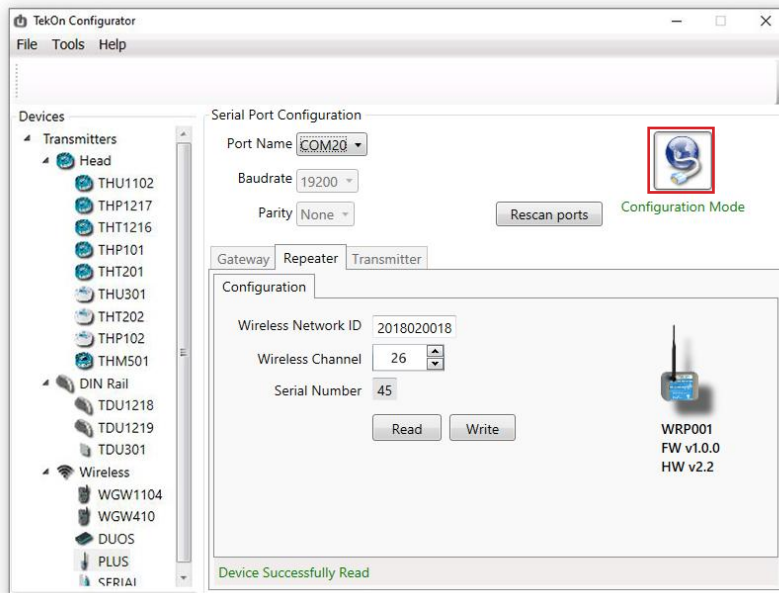


¹ You can check device's serial port name in "Device Manager" on Microsoft® Windows® operating system.

CONNECT AND CONFIGURE THE PLUS WIRELESS REPEATER

06

Click on *Configuration Mode* [🌐] button.



- ▶ LED permanently on
- - - - -▶ LEDs flashing until wireless connection is established
- ▶ LED permanently off

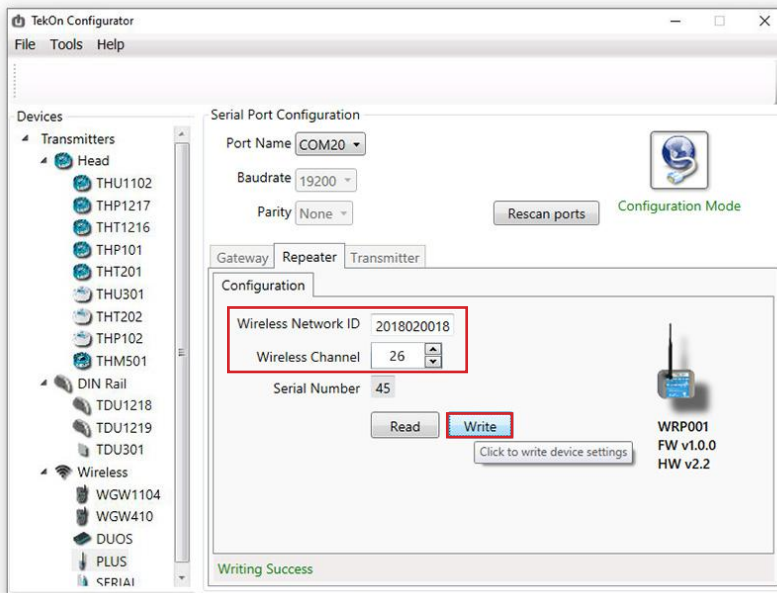
step
06

CONNECT AND CONFIGURE THE PLUS WIRELESS REPEATER

07

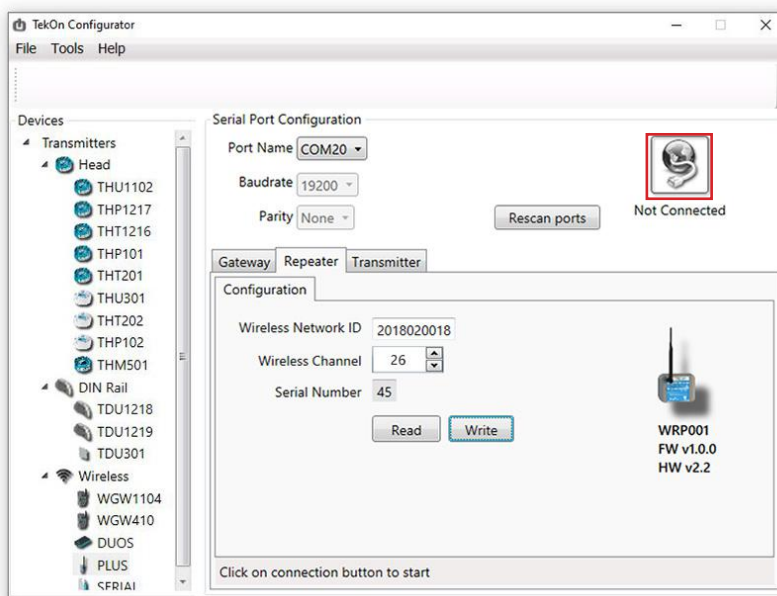
Configure *Wireless Network ID* and *Wireless Channel* previously obtained from *Gateway*.

Click on *Write* button to update *Transmitter* settings.

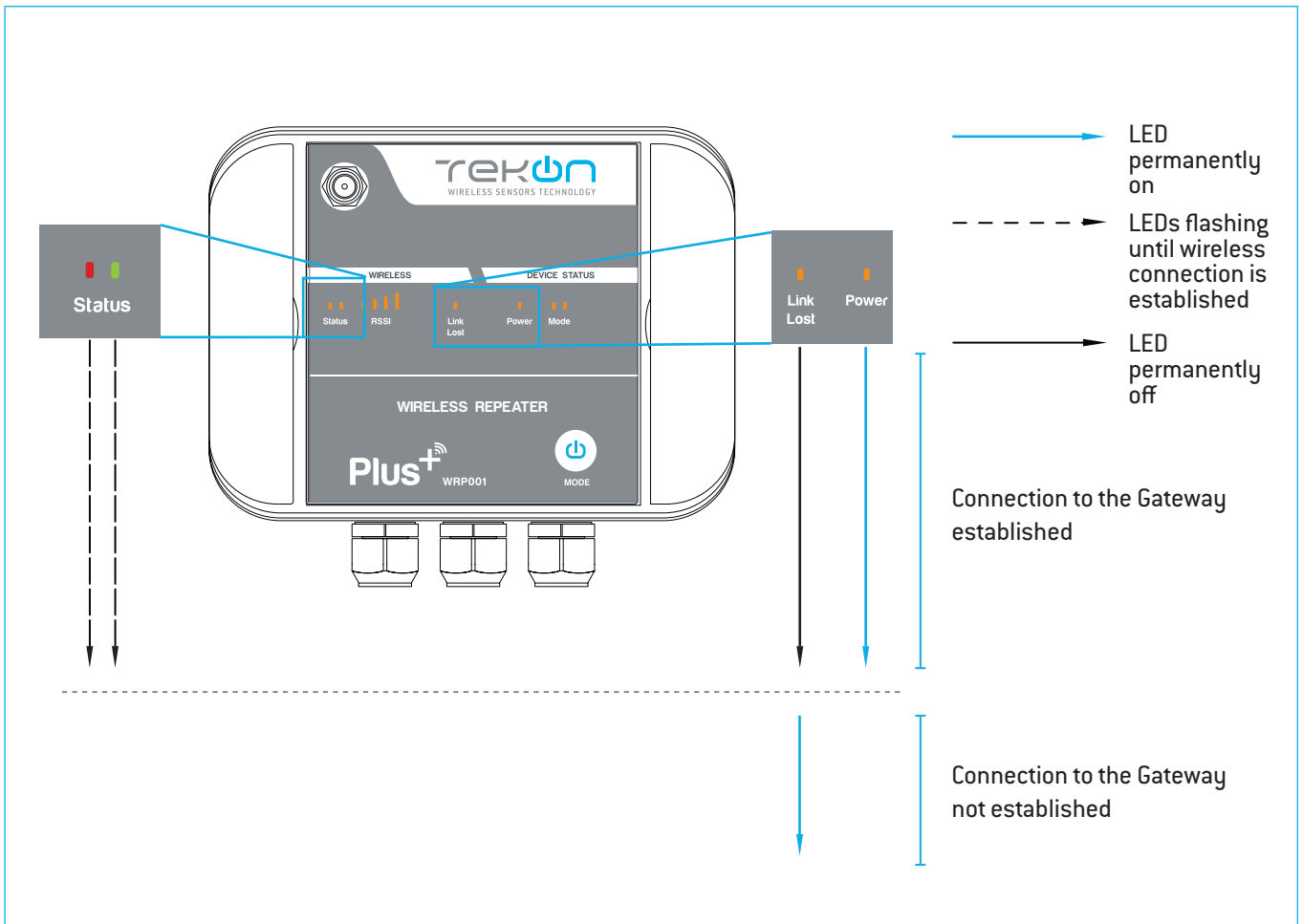


08

Click on *Configuration Mode* (🌐) button to exit setup and resume normal operating mode.



CONNECT AND CONFIGURE THE PLUS WIRELESS REPEATER



step
07
SITE SURVEY MODE

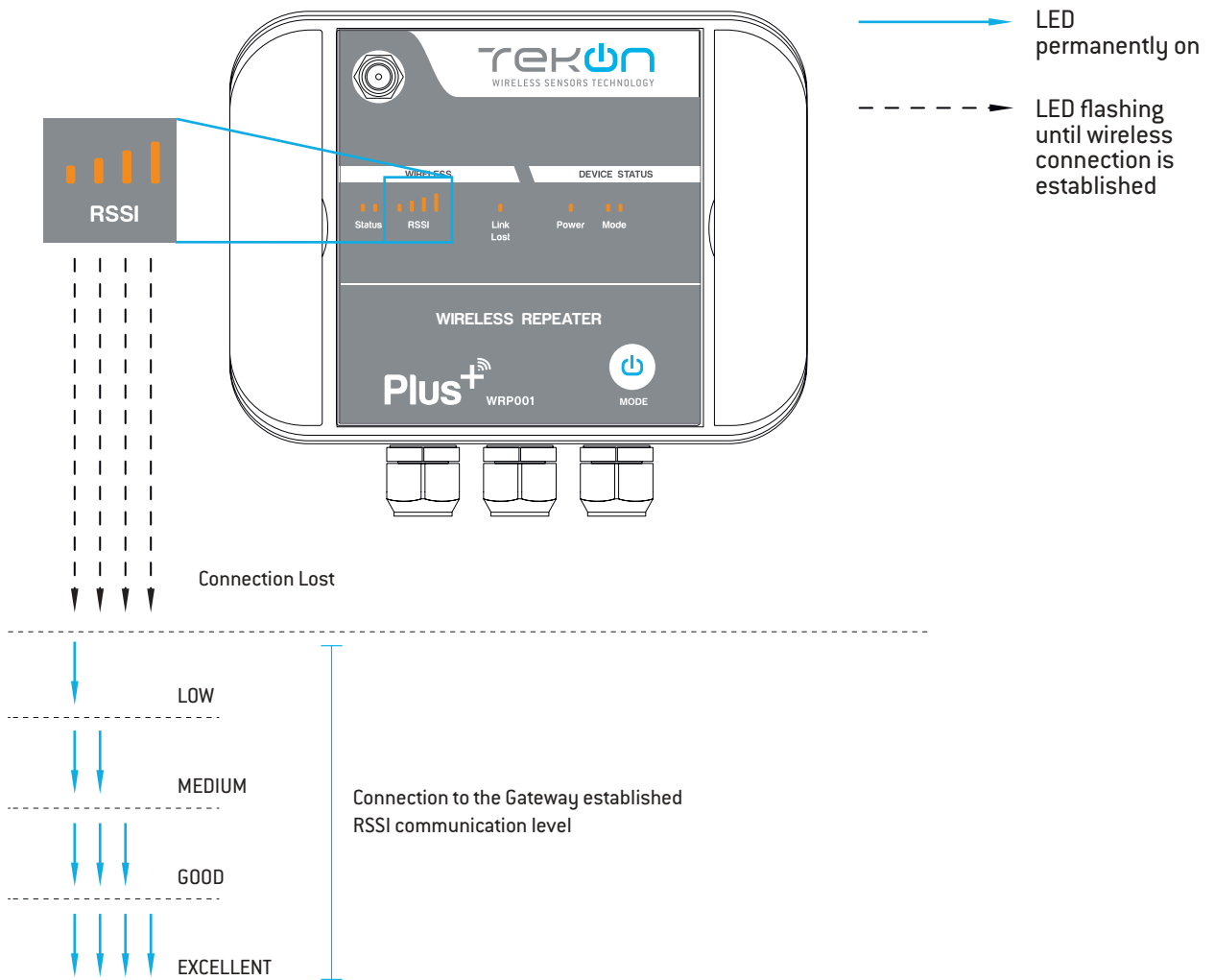
Site survey mode is a tool that allows a quick wireless signal strength evaluation at the site of installation. It doesn't require additional equipment or software.

This feature is available in all the transmitters and repeater from PLUS Product Family.

01

Press and hold Mode (⏻) button until Status LEDs are permanently on and Mode LEDs flash.

RSSI LEDs indicate the signal strength.



02

Press and hold Mode (⏻) button until RSSI LEDs switch off and device resumes normal operation mode.

TEKON ELECTRONICS

a brand of Bresimar Automação S.A.

Avenida Europa, 460
Quinta do Simão
3800-230 Aveiro
PORTUGAL

Sales

P.: +351 234 303 320
M.: +351 933 033 250
E.: sales@tekonelectronics.com

Technical Support

E.: support@tekonelectronics.com

