

**PT100 ISOLATED  
TEMPERATURE  
HEAD  
TRANSMITTER  
THP102-I**



**INSTALLATION GUIDE**

IG\_INHD\_THP102-I\_E01A

# PT100 ISOLATED TEMPERATURE HEAD TRANSMITTER THP102-I

## INSTALLATION GUIDE

step  
**01**

**CONNECT AND CONFIGURE THP102-I PT100 ISOLATED TEMPERATURE HEAD  
TRANSMITTER**

Pages 3 to 5

---

step

**01**

CONNECT AND CONFIGURE THP102-I PT100 ISOLATED TEMPERATURE HEAD TRANSMITTER

DOWNLOAD AND INSTALL "TEKON CONFIGURATOR" FREE SOFTWARE FROM TEKON ELECTRONICS WEBSITE

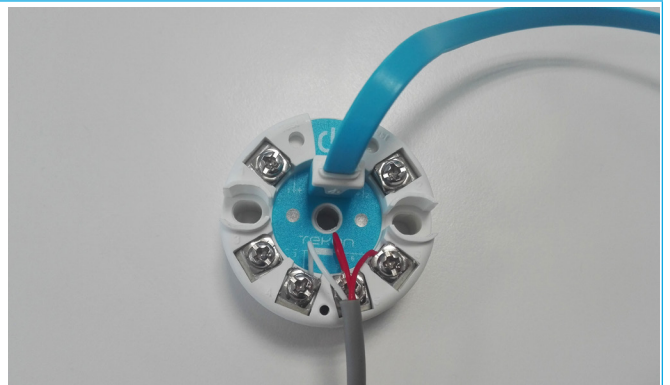
**01**

Connect the THP102-I transmitter to the Mini-USB cable.



**02**

Connect the PT100 sensor to the THP102-I transmitter.



**03**

Connect the Mini-USB cable to the computer.



**04**

Execute Tekon Configurator software.



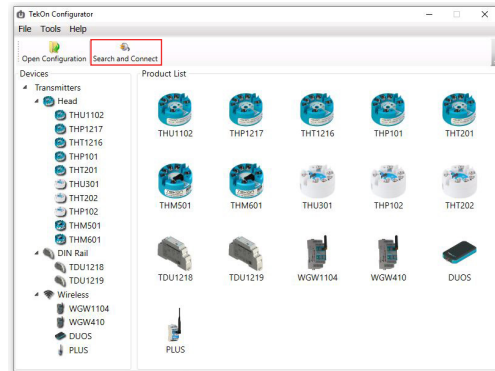
step

**01**

CONNECT AND CONFIGURE THP102-I PT100 ISOLATED TEMPERATURE HEAD TRANSMITTER

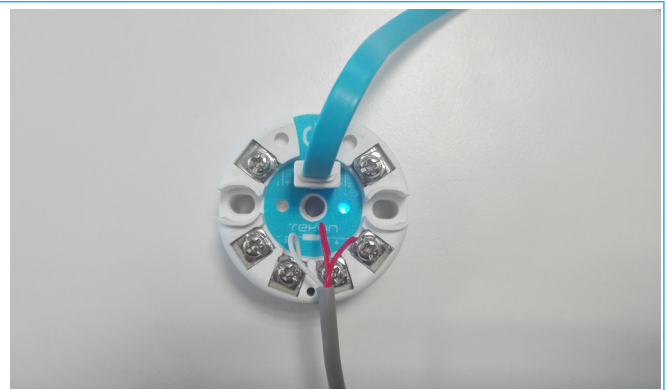
**05**

Select the “Search and Connect” option.



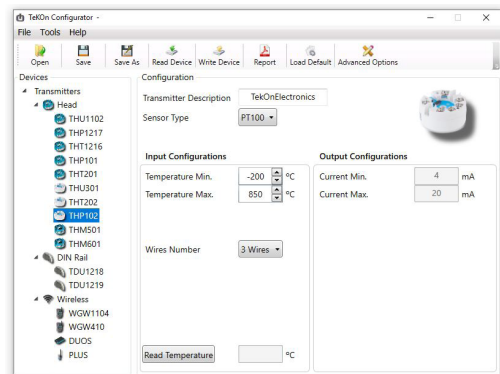
**06**

While the THP102-I transmitter is in configuration mode, the blue led will blink continuously.



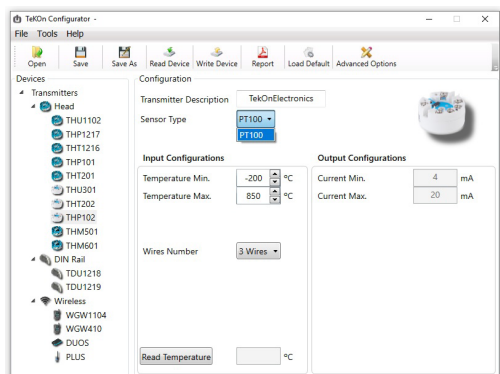
**07**

The software automatically identifies the device and opens the respective configuration form with the factory default settings.



**08**

In this model, PT100 is the only sensor type accepted.



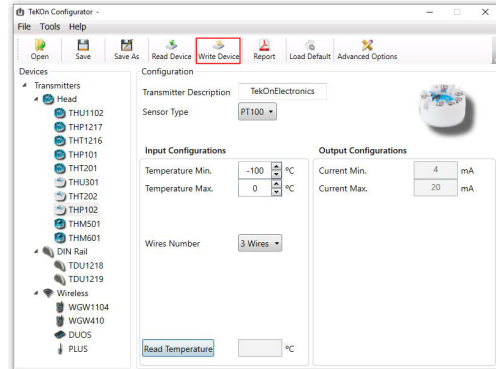
step  
**01**

CONNECT AND CONFIGURE THP102-I PT100 ISOLATED TEMPERATURE HEAD TRANSMITTER

**09**

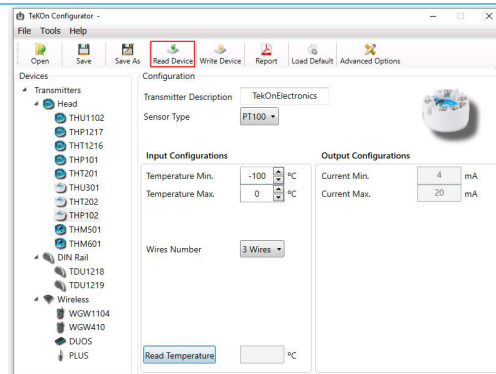
To change the selected sensor settings, update the value of the desired parameter and select the “Write Device” option.

In this example, we use the default PT100 sensor type and change the “Temperature Min.” to -100 and “Temperature Max.” to 0.



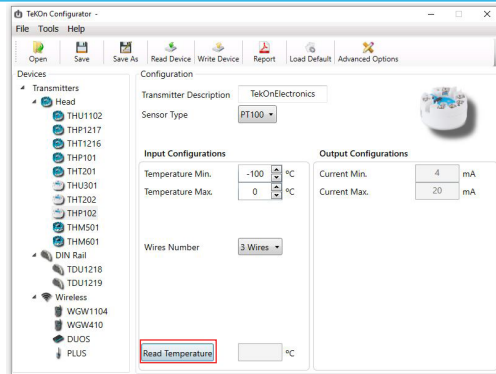
**10**

To confirm if the change has been successfully completed, select the “Read Device”.



**11**

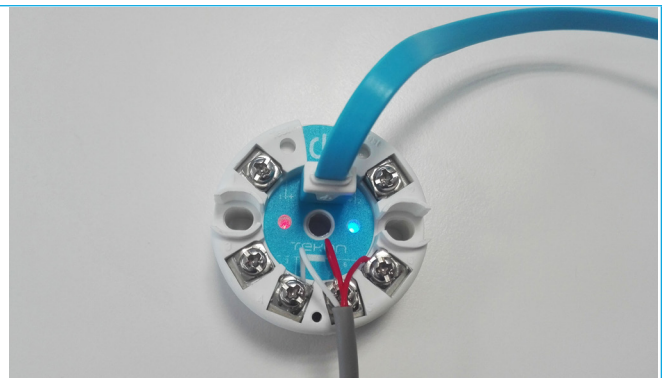
Click on the “Read Temperature” button to read the current temperature value.



**12**

If the temperature reading is outside the set temperature range, the transmitter THP102-I red and blue led will blink simultaneously.

**Note:** please review your settings and check the datasheet status led information to analyse all the led behaviours.

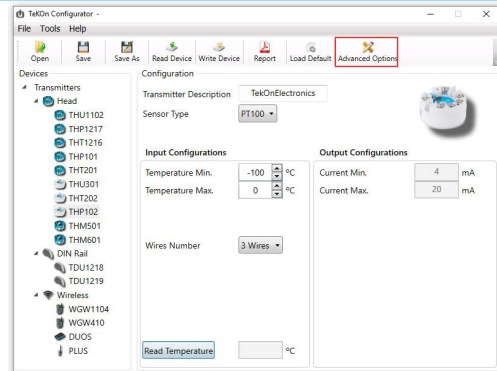


step  
**01**

CONNECT AND CONFIGURE THP102-I PT100 ISOLATED TEMPERATURE HEAD TRANSMITTER

**13**

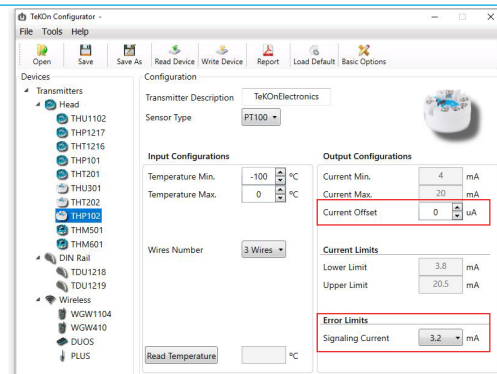
Click on **“Advanced Options”** tab, to access other editable options.



**14**

You can set two options:

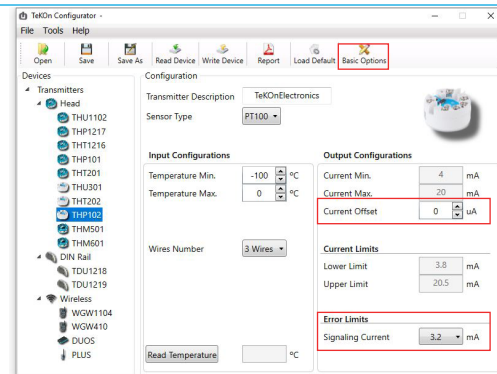
- **“Current Offset”**: value added to the output current, to perform an offset;
- **“Signaling Current”**: current set to alert for sensor problems (open circuit, no sensor connected or sensor damaged) ;



**15**

Edit the fields and click on **“Write Device”** to save the changes.

To return to the previous software window, click on the **“Basic Options”** tab.



**Notes**

---

---

---

---

---

---

---

---

---

---

---

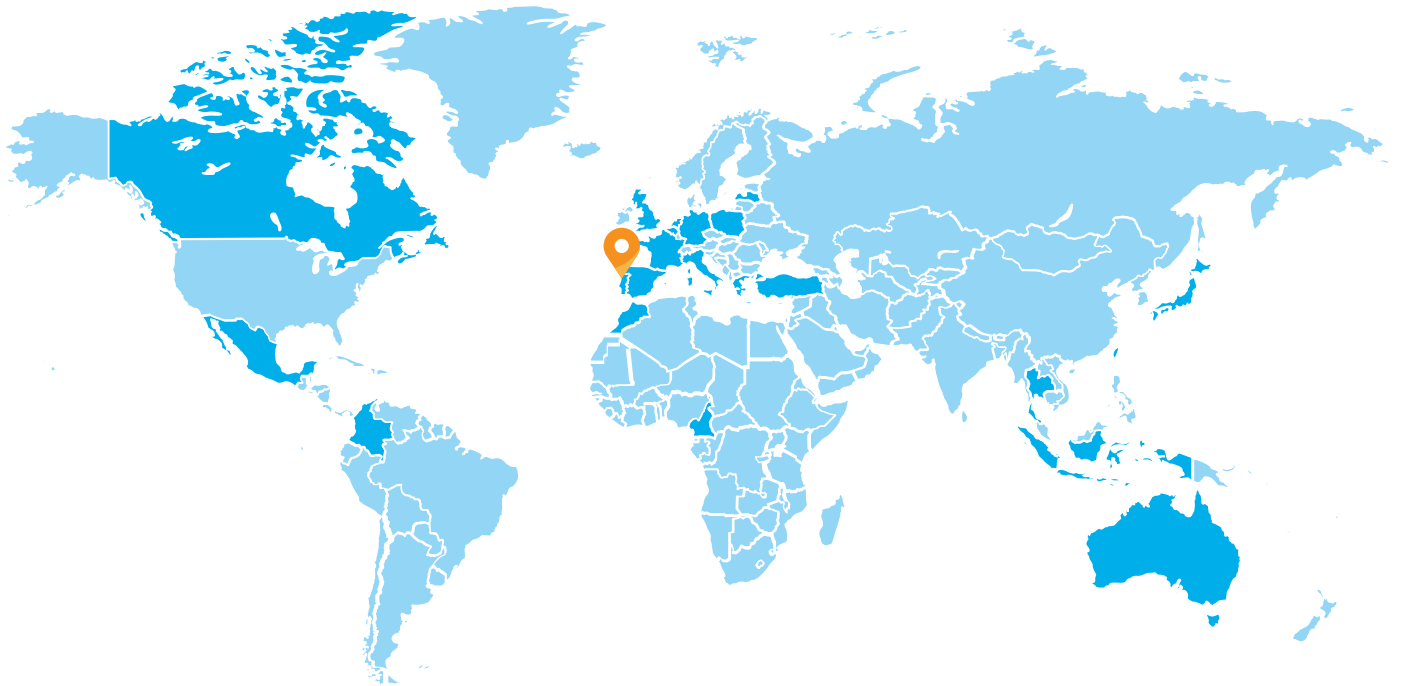
---

---

---

---

---



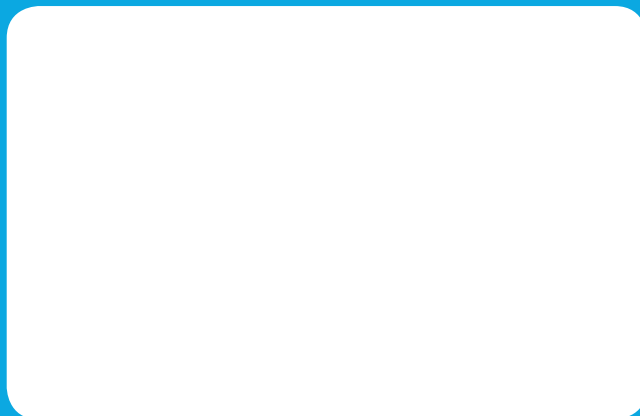
- 📍 Headquarters
- Product Presence

**FIND US AT**  
[WWW.TEKONELECTRONICS.COM](http://WWW.TEKONELECTRONICS.COM)

TEKON ELECTRONICS  
a brand of Bresimar Automação S.A.

Quinta do Simão  
3800-230 Aveiro  
PORTUGAL

P.: +351 234 303 320  
M.: +351 933 033 250  
E.: sales@tekonelectronics.com



Cofinanciado por:



UNIÃO EUROPEIA  
Fundo Europeu  
de Desenvolvimento Regional