

# UNIVERSAL TEMPERATURE ISOLATED DIN RAIL TRANSMITTER TDU301-I



## INSTALLATION GUIDE

IG\_DINR\_TDU301-I\_E01A

# UNIVERSAL TEMPERATURE ISOLATED DIN RAIL TRANSMITTER TDU301-I

## INSTALLATION GUIDE

step  
**01**

CONNECT AND CONFIGURE TDU301-I UNIVERSAL TEMPERATURE ISOLATED DIN RAIL TRANSMITTER

Pages 3 to 6

---

step

**01**

CONNECT AND CONFIGURE TDU<sub>301-I</sub> UNIV. TEMP. ISOLATED DIN RAIL TRANSMITTER

DOWNLOAD AND INSTALL "TEKON CONFIGURATOR" FREE SOFTWARE FROM TEKON ELECTRONICS WEBSITE

**01**

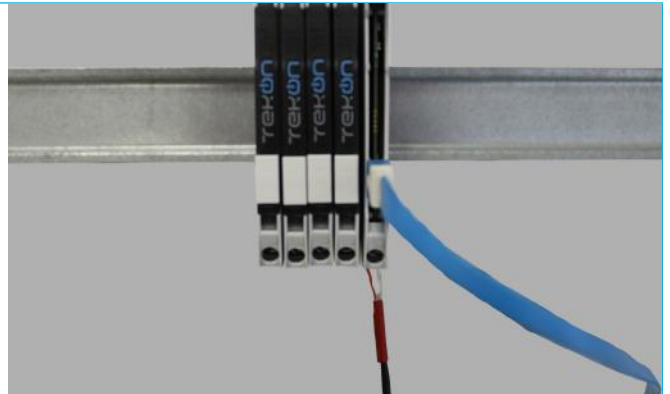
Connect the TDU<sub>301-I</sub> transmitter to the Micro-USB cable.



**02**

Connect a Thermocouple or PT100 sensor to the TDU<sub>301-I</sub> transmitter.

**Note:** in this example, we will use a thermocouple.



**03**

Connect the USB cable to the computer.



**04**

Execute Tekon Configurator software.

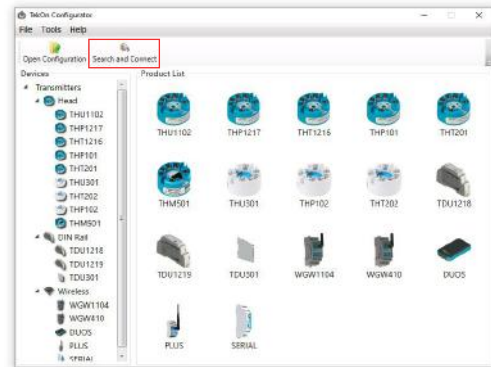


step  
**01**

CONNECT AND CONFIGURE TDU301-I UNIV. TEMP. ISOLATED DIN RAIL TRANSMITTER

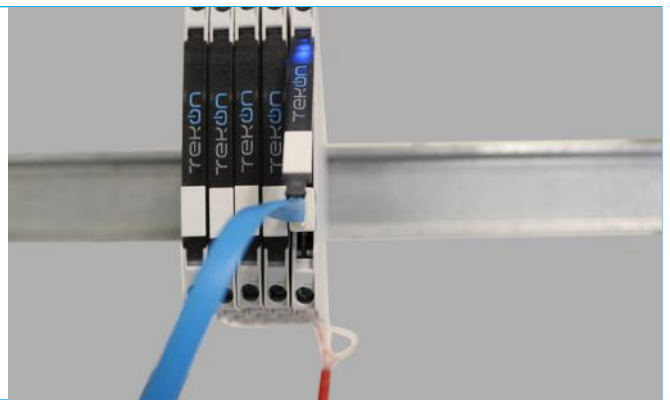
**05**

Select the “Search and Connect” option.



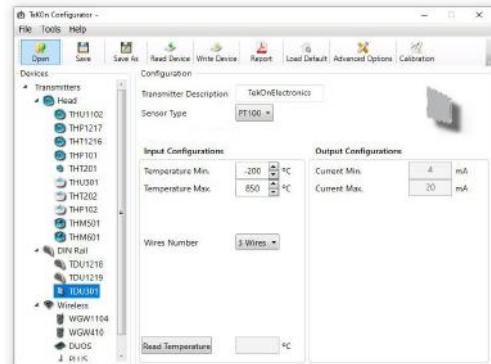
**06**

While the TDU301-I transmitter is in configuration mode, the blue led will blink continuously.



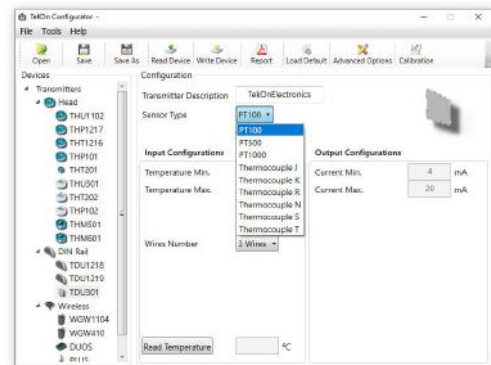
**07**

The software automatically identifies the device and opens the respective configuration form with the factory default settings.



**08**

Choose which type of sensor (PT100 or Thermocouple) you want to use.



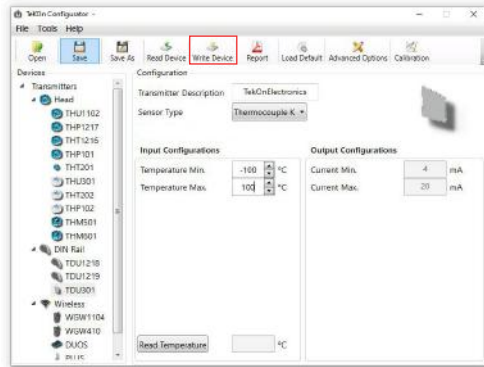
step  
**01**

**CONNECT AND CONFIGURE TDU301-I UNIV. TEMP. ISOLATED DIN RAIL TRANSMITTER**

**09**

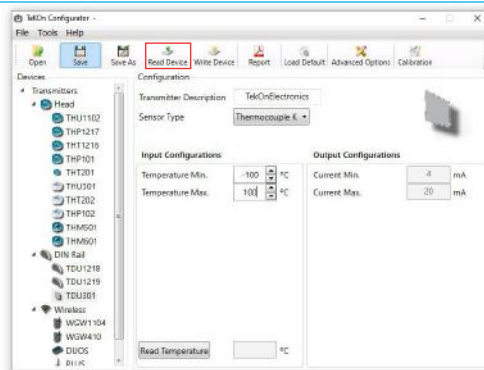
To change the selected sensor settings, update the value of the desired parameter and select the “Write Device” option.

In this example, we use the **thermocouple K** and change the “Temperature Min.” to -100 and “Temperature Max.” to 100.



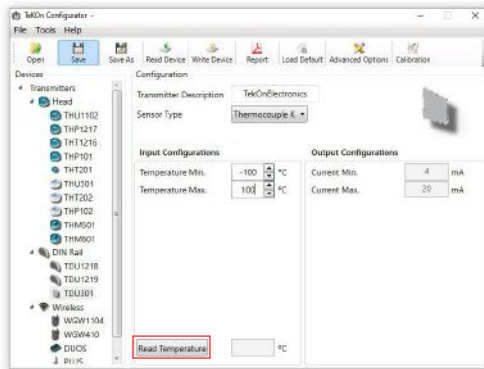
**10**

To confirm if the change has been successfully completed, select the “Read Device”.



**11**

Click on the “Read Temperature” button to read the current temperature value.



**12**

If the temperature reading is outside the set temperature range, the transmitter TDU301-I red and blue led will blink simultaneously.

**Note:** please review your settings and check the datasheet status led information to analyse all the led behaviours.

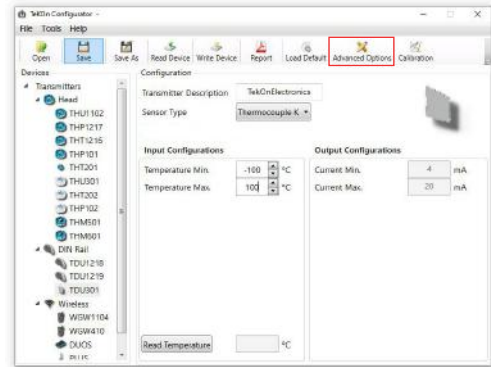


step  
**01**

CONNECT AND CONFIGURE TDU301-I UNIV. TEMP. ISOLATED DIN RAIL TRANSMITTER

**13**

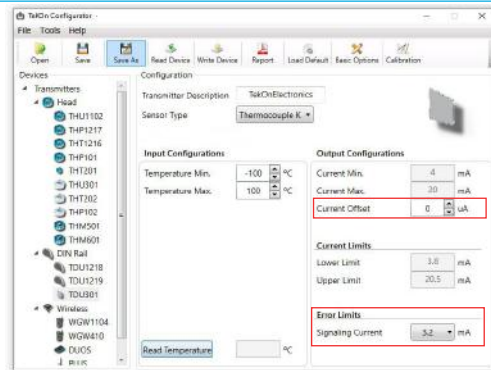
Click on **“Advanced Options”** tab, to access other editable options.



**14**

You can set two options:

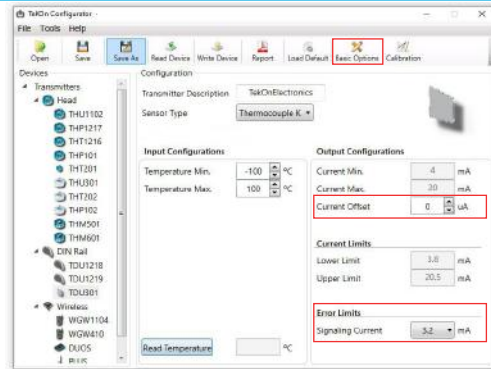
- **“Current Offset”**: value added to the output current, to perform an offset;
- **“Signaling Current”**: current set to alert for sensor problems (open circuit, no sensor connected or sensor damaged) ;



**15**

Edit the fields and click on **“Write Device”** to save the changes.

To return to the previous software window, click on the **“Basic Options”** tab.



Notes

---

---

---

---

---

---

---

---

---

---

---

---

---

---

---

---

---

---

---

---

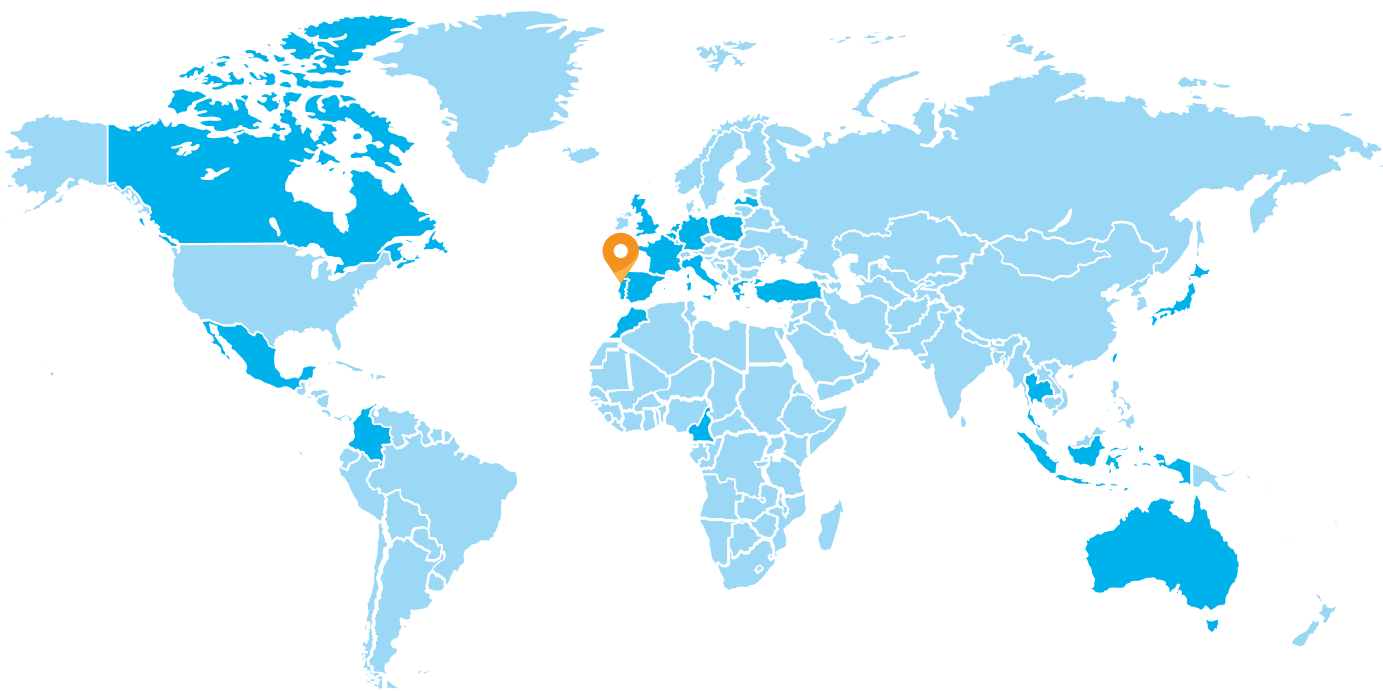
---

---

---

---

---



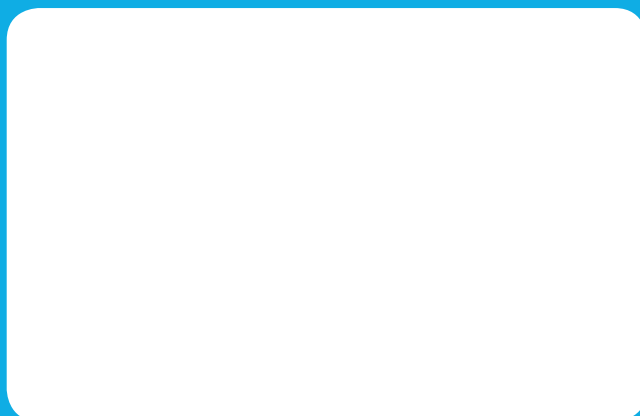
-  Headquarters
-  Product Presence

**FIND US AT**  
[WWW.TEKONELECTRONICS.COM](http://WWW.TEKONELECTRONICS.COM)

TEKON ELECTRONICS  
a brand of Bresimar Automação S.A.

Avenida Europa, 460  
Quinta do Simão  
3800-230 Aveiro  
PORTUGAL

P.: +351 234 303 320  
M.: +351 933 033 250  
E.: sales@tekonelectronics.com



Cofinanciado por:



UNIÃO EUROPEIA  
Fundo Europeu  
de Desenvolvimento Regional