

# SOLAR PANEL 2W



## TECHNICAL SPECIFICATIONS

### REFERENCE

PA123791600

### HOUSING

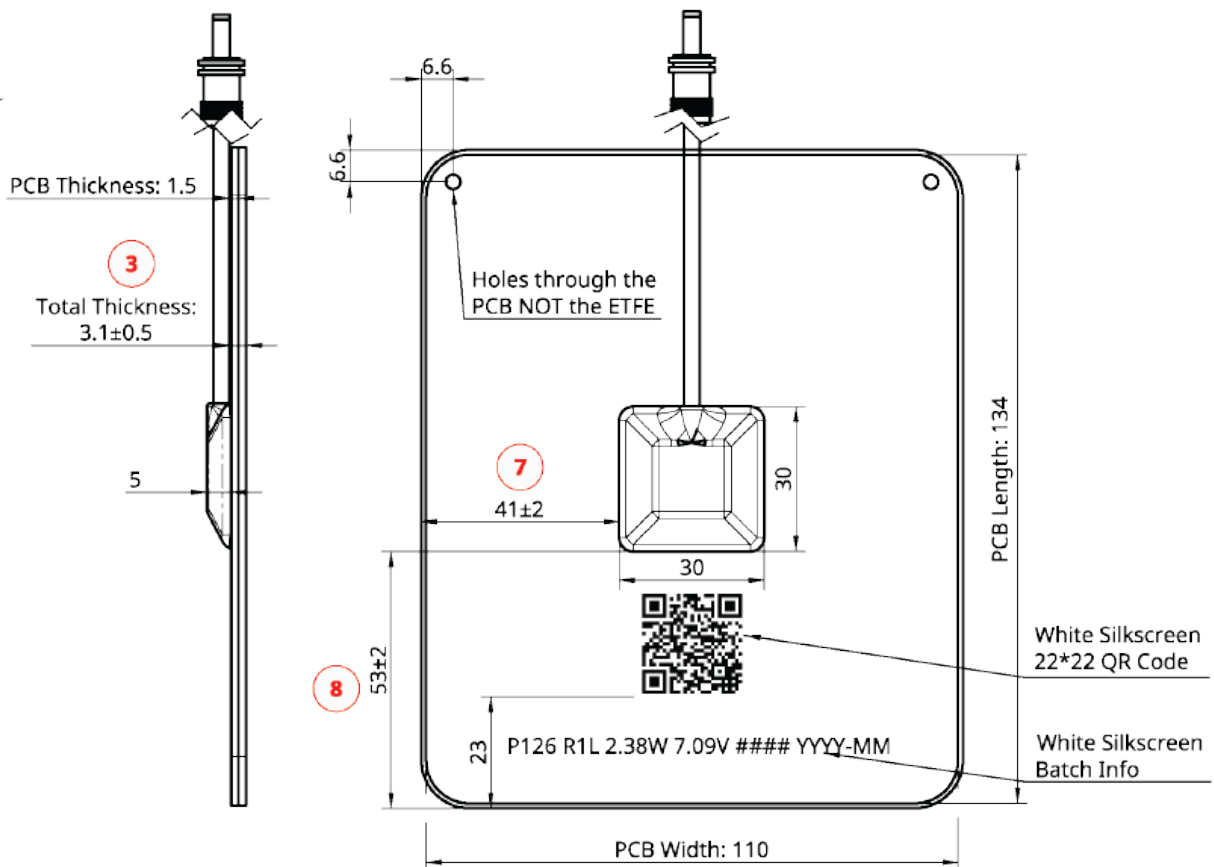
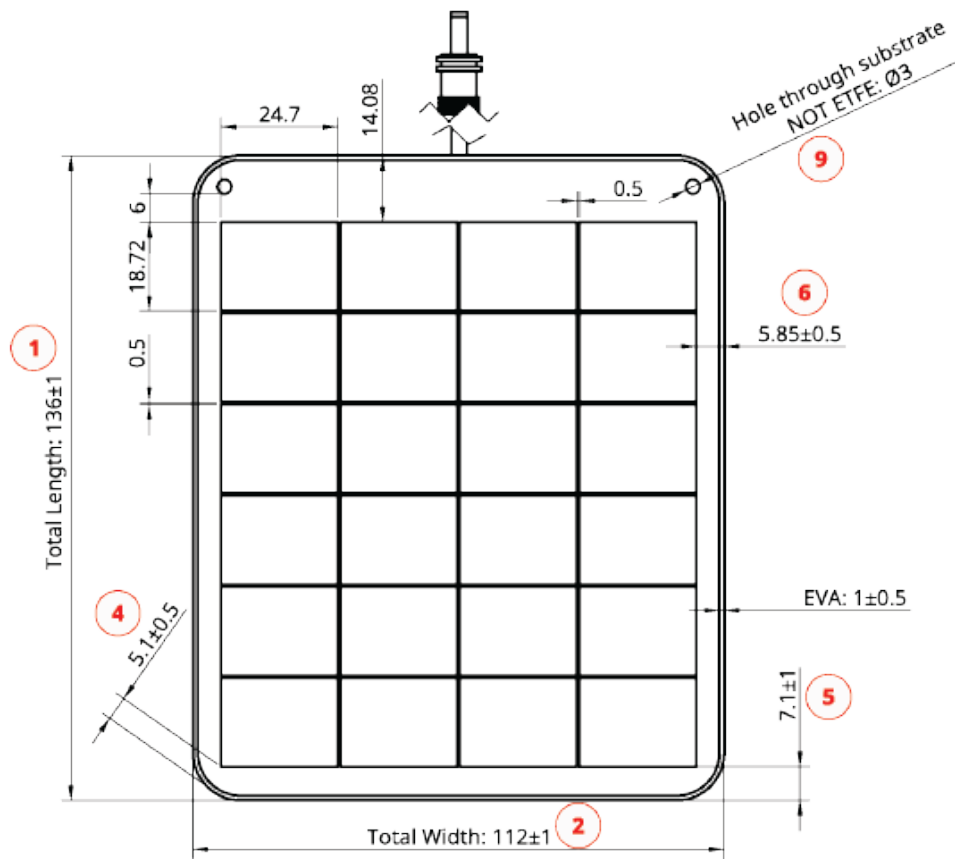
Dimensions	112 x 136 x 2,7 mm
Material	Textured ETFE
Weight	Approx. 79 g
Protection index	IPX7

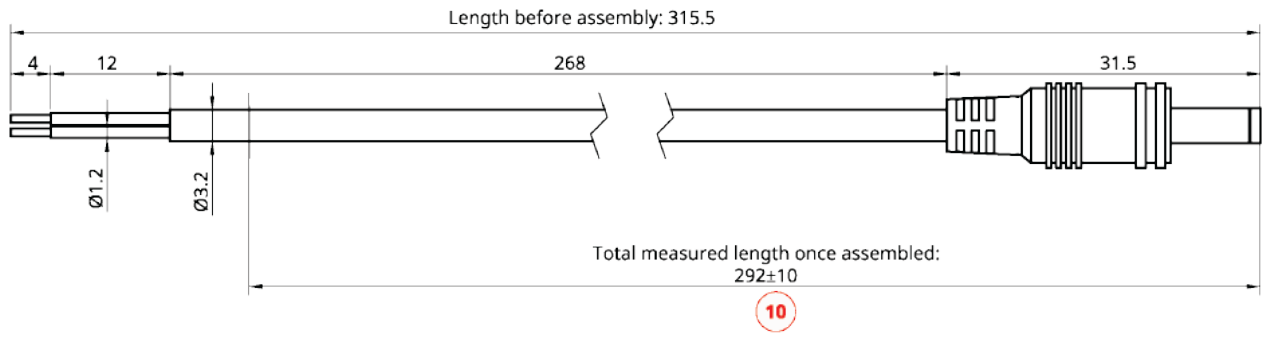
### POWER SPECIFICATIONS

	NOMINAL	EXPECTED*
Open-circuit voltage	8.59 V	8.34 V
Voltage at max power	7.09 V	6.84 V
Short-circuit current	0.37 A	0.33 A
Current at max power	0.34 A	0.29 A
Maximum power	2.38 W	2.31 W
Output tolerance	± 10% of voltage and current	
Solar cell	P126 - ETFE	
Cell pieces	24	

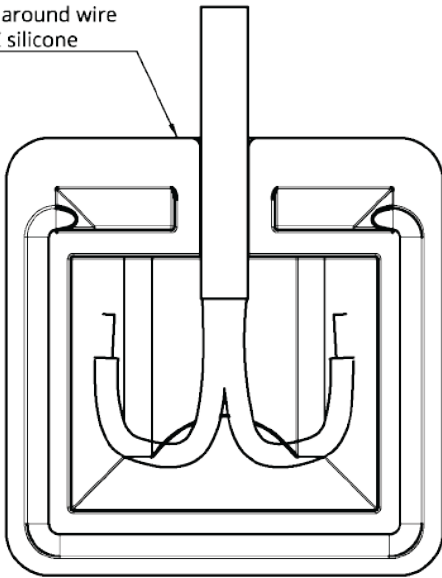
**\*Note:** Expected values are adjusted for real-world losses that include cutting of cells, imperfect transmissivity of the encapsulation layers, and the tolerance of the lowest performing cell piece in the series.

DS\_ACC\_PLUS\_SOLAR\_PANEL\_2W\_E01A

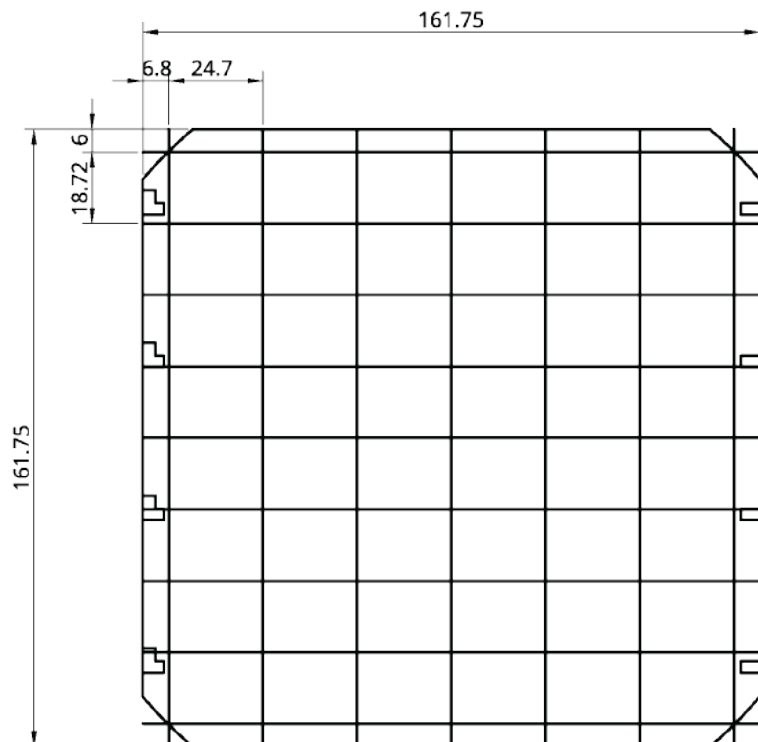




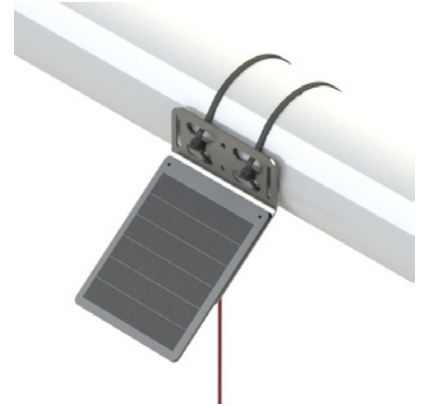
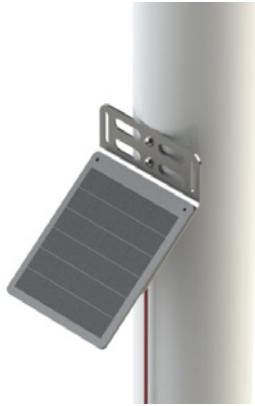
Interior and around wire  
with HT906Z silicone



Assembly to J-Box



MOUNTING OPTIONS



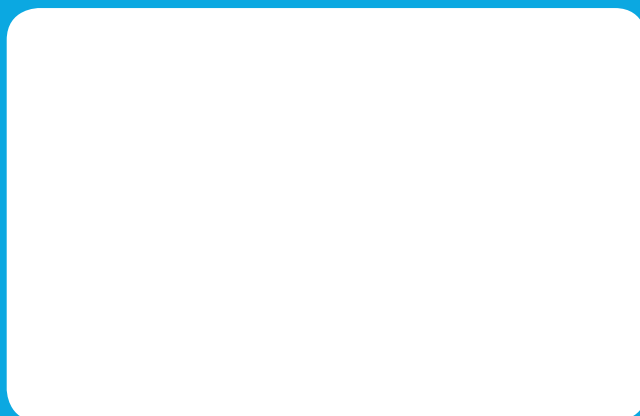
COMPATIBLE PRODUCTS AND ACCESSORIES

PA123791300	PLUS INTERNAL RECHARGEABLE BATTERIES KIT
PA123791301	PLUS RECHARGEABLE BATTERIES POWER BOX
907999931	PLUS MOUNTING ACCESSORIES FOR 1/2" BSP PROBE V2.0

TEKON ELECTRONICS  
a brand of Bresimar Automação S.A.

Avenida Europa, 460  
Quinta do Simão  
3800-230 Aveiro  
PORTUGAL

P.: +351 234 303 320  
M.: +351 933 033 250  
E.: sales@tekonelectronics.com



Cofinanciado por:



UNIÃO EUROPEIA  
Fundo Europeu  
de Desenvolvimento Regional